

# POSHAN COVID-19 MONITORING

Tracking information from surveys,  
rapid assessments and information  
systems to reinforce the nutrition  
response during the COVID-19 crisis

For any feedback or additional information please contact: [poshancoviditb@gmail.com](mailto:poshancoviditb@gmail.com)

Supported By



# Methods

The POSHAN COVID-19 Monitoring report for India is prepared by various development partners working in the area of food and nutrition security and compiled by UNICEF, IIT-B, IFPRI, World Food Programme and the World Bank.

This document consolidates relevant data to monitor the interactions between COVID-19 and nutrition across the most populous states affected by both the pandemic and overall malnutrition. The purpose is to present available data to policy makers and programme managers to strengthen the public health nutrition during the COVID-19 crisis.

The POSHAN COVID-19 Monitoring Report sources information from surveys, rapid assessments, academic journals, media, health management and child development information systems, state and district level reports and is updated monthly. The report also presents the work by numerous development partners in the sectors of nutrition and food security.

In addition to this report, we have also developed, [POSHAN COVID-19 Resources](#) - an online repository of key guidelines/documents on National and International Recommendations, Operational Guidelines and Program Guidance on COVID-19. We hope these two documents serve as useful resources in the POSHAN COVID-19 response.

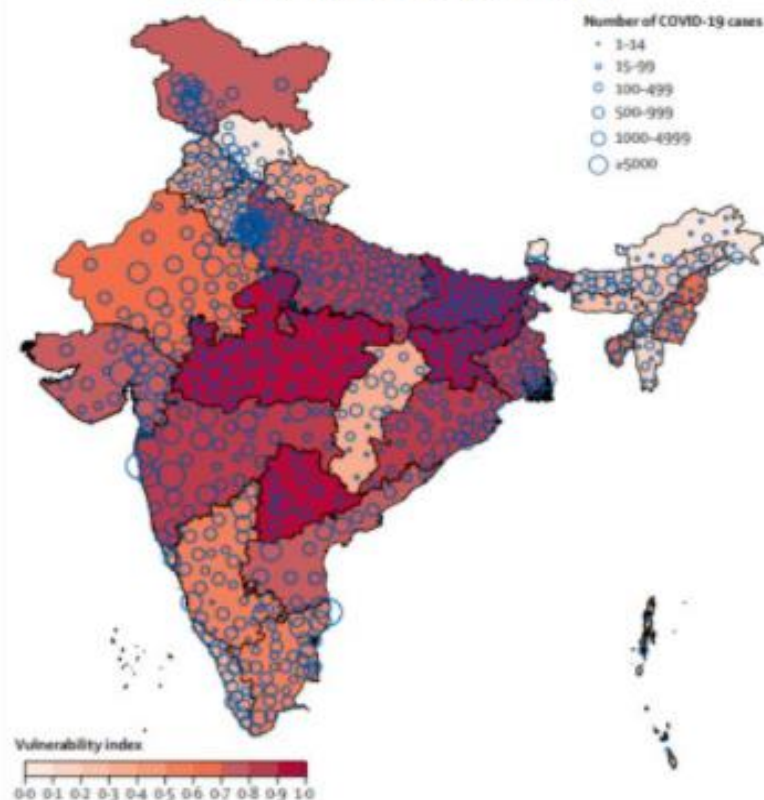
We realize that when data are collected from many different sources and information that incorrect or incomplete data can appear. We kindly invite to present any issues detected to [PoshanCOVIDiitb@gmail.com](mailto:PoshanCOVIDiitb@gmail.com). By working together, we can compile robust information on Poshan & COVID-19 to assure the most appropriate response for India.

## Introduction

The COVID-19 virus was first detected January 2020 and the government implemented three months of lockdown to delay rapid transmission to prevent overwhelming of the health system. The response saved thousands of lives and allowed significant health systems strengthening before the rising tides of infection, it also caused millions to lose income and face the risk of increased poverty, hunger, and malnutrition.

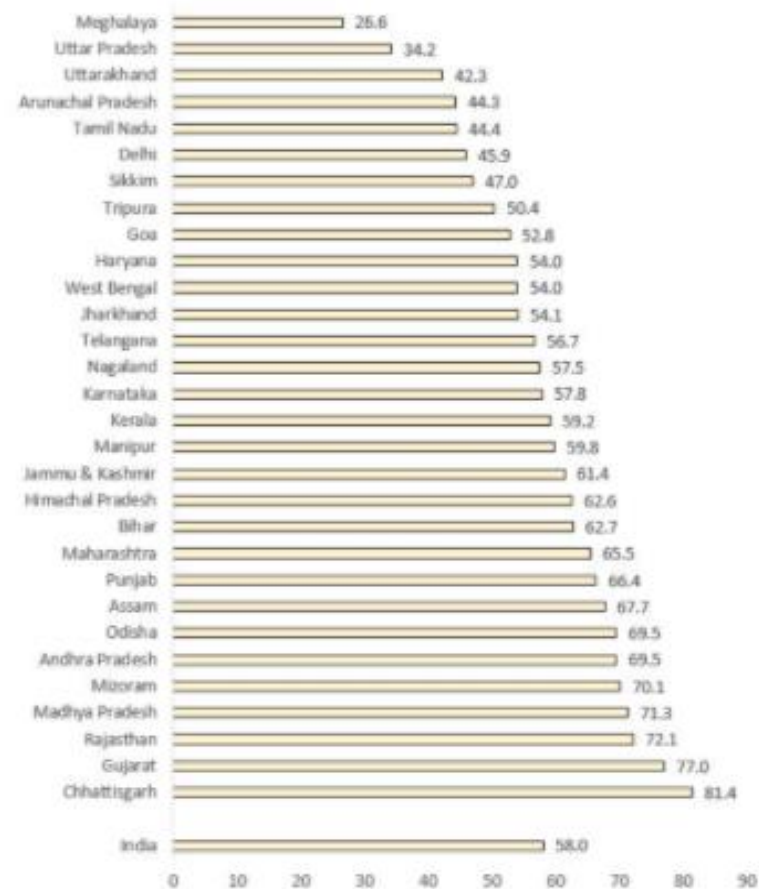
The lockdown commanded closure of all but essential foods, goods, fire, police and emergency services. By the end of June the [virus was found in over 98% districts of the country](#). Global and national reports sounded the alarms for social safety nets to protect populations from limited access to health & nutrition services, food access and the devastating effects of poverty. The government responded with intensified efforts to ensure food security and livelihoods. In June, India started the unlock process and routine health and nutrition services have restarted in many parts of the country.

Overall COVID-19 vulnerability index and number of confirmed cases as of June 17, 2020



Source : [Acharya & Porwal, 2020 - The Lancet](#)

Exclusive Breastfeeding (CNNS 2016-18)



Source : [NutritionINDIA.info](#)

Breastmilk is the first food and rich in antibodies, proteins and other agents to protect children from infection. Early and exclusive breastfeeding in the first six months of life is one of the most easy and effective interventions to save lives during infancy. To safeguard the youngest populations from the pernicious effects of COVID-19 and the lockdown, it is critical to protect, promote and support breastfeeding during all emergencies. Overall in India less than 2/3 children were exclusively breastfed (CNNS 2016-18).

As reported at the [BPNI webinar](#) in June, during the lockdown, intense marketing efforts by producers in violation of the code of market for breastmilk substitutes (BMS) have provided free distribution of BMS to government and NGOs providing relief, sponsored doctors and medical associations for marketing and strategically used online targeted advertising. Civil society groups and international organizations have stepped in to stop the distribution of BMS. The MoHFW and MWCD have refocused attention on [protecting, promoting and supporting breastfeeding](#) during the emergency through media, the health care and Anganwadi center systems.

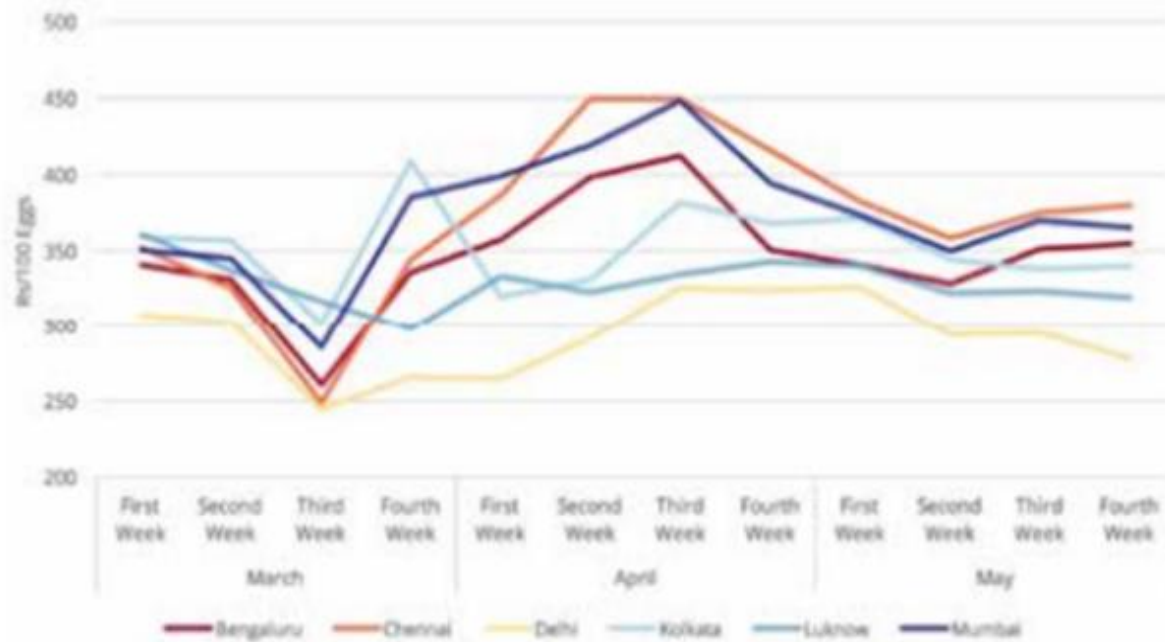
To prevent malnutrition, continued support is needed to ensure access to essential health and nutrition services and proper foods and feeding for adolescents, women and young children. Tracking of nutrition and food security conditions and access services will allow the early identification of bottlenecks in the response and allows a proactive response to prevent the increase of food insecurity and malnutrition during the COVID-19 response.





States	Are AWC currently open?	Are CMAM services operational?	Are MAA services currently provided ?	Are NRCs operational for management of Acute Malnutrition?	THR provided for children (6-35, 36-72 months of age)?	Are Take Home Rations (THR) provided for Preg/Lact Women?	Are VHSNDs being held?	Is Growth Monitoring and Promotion conducted?	Is the HBYC program delivering services?	Is the PMMVY program providing maternity benefits?
RAJASTHAN	No	No	Yes	Yes	Yes	Yes	Yes	Yes	Yes	Yes
TELANGANA	No	Yes	Yes	Yes	Yes	Yes	No	No	No	Yes
UTTAR PRADESH	No	No	No	Yes	Yes	Yes	Yes	No	No	No
WEST BENGAL	No	No	Yes	Yes	Yes	Yes	Yes	No	No	Yes

Figure 11: Egg CC Prices from March 2020 to May 2020



Data Source: e2necc.com (National Egg Coordinating Committee)

In the [research Pandemic Prices, the Tata-Cornell Institute for Agriculture and Nutrition](#) analyzed the impact of COVID-19 on urban food prices in 11 cities from March to May 2020 (Bengaluru, Chennai, Delhi, Hyderabad, Mumbai, Kolkata, Bhubaneshwar, Bhopal, Patna, Guwahati, and Lucknow). Weekly average retail prices from March to May 2020 were compared to the same period in 2019.

- As nutrient dense foods become more expensive dietary diversity is reduced and risk of malnutrition increases.
- Following the lockdown, the price of potatoes increased by 20%-180%, onions increased up to 200% and the cost of some pulses increased by as much as 80%. The price of eggs initially fell due to rumors that poultry could carry the virus, but later in lockdown it increased by up to 30%.
- After lifting of the lockdown, prices stabilized for cereals, eggs, potatoes, onions, and tomatoes but price of pulses remained high due to supply chain issues.
- Food prices were most heavily affected in Delhi, Mumbai and Chennai.



# **STATE MONITORING**

## Risk Profiles

COVID-19 Conditions	Data and Source – Updated 16th May 2020					
First case diagnosed	12th March 2020 (MoHFW.gov.in) ICMR NIE-Chennai					
Districts with COVID cases / Total	11/13 Districts 22nd April 2020 COVID Update IIT-Bombay					
Nutrition Conditions	Estimate, date of data collection and source					
Wasting in children under-five	17.1% from 8/2016 - 12/2016 (CNNS)					
Exclusive Breastfeeding	70.2% from 5/2015 - 8/2015 (NFHS-4)					
Thinness in women 15-19 years	9.4% from 8/2016 - 12/2016 (CNNS)					
Anemia in women 15-19 years	39.4% from 8/2016 - 12/2016 (CNNS)					
	For further information, see <a href="#">NutritionINDIA.info</a> and <a href="#">POSHAN Led by IFPRI</a>					
Mapping of Seasonal Threats / Conditions						
Diarrhea	During seasons of summer and rains (April to Sept)					
Dengue	July-Sept					
Malaria	Tribal areas (7 districts out of 13) prone to Malaria during rainy season (Aug to Oct)					
Encephalitis	During summer (Apr-Jun) and Dec-Feb					
Floods/Droughts	Drought: May-June Floods: Aug-Oct					
Other Threats						
Updates from state level	Andhra Pradesh Government Decrees					
HMIS monthly reporting	Baseline (Oct-Dec 19)	March 20	April 20	May 20	June 20	July 20
In-school girls WIF (% & #)	61.8 (940K)					
Out of school girls WIF (% & #)	95.0 (111K)					
Pediatric IFA (% & #)	1.4 (45K)					
Real-time reporting and coverage of ICDS- CAS (yes/no-date, districts)	MWCD Online Monitoring tool for Anganwadi Centre visits 13/13 districts covered with ICDS-CAS					
Monitoring tools implemented by development partners in states	<a href="https://wdcw.ap.gov.in/Esadhana.html">https://wdcw.ap.gov.in/Esadhana.html</a>					
National and local media reports (Radio, TV Newspapers) on nutrition conditions in affected populations.						

## Continuity of services

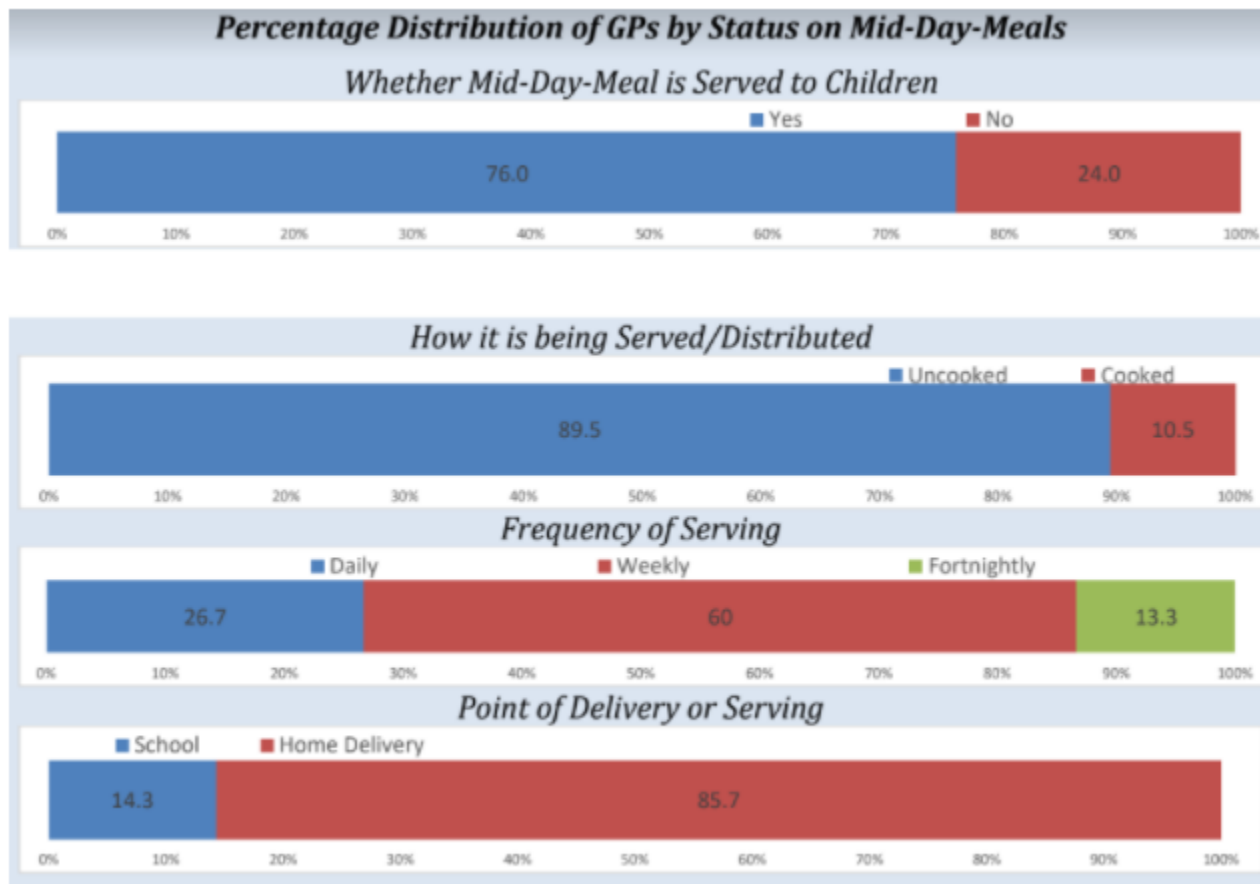
[illegible]

#### 4W – Who does What, Where and When

Who	What	Where	When
Health Supervisors	Trained and oriented the Health Supervisors of Andhra Pradesh Social Welfare Residential Educational Institutions (APSWERIES). 184 Health Supervisors were oriented on nutrition during COVID times for Adolescents especially the students of residential schools. The Consultant Nutrition and Advocacy, UNICEF has oriented and advocated for ensuring nutrition practices during and post COVID times	Across Residential Schools of Andhra Pradesh,	24th April 2020 These sessions will be continued
Slum Level Federations (SLFs) of urban pockets	The monitoring staff and representatives of SLFs of Mission for Elimination of Poverty in Urban Areas (MEPMA) have been oriented on WASH practices, handwashing, social distancing. The Consultant Nutrition and Advocacy, UNICEF has supported this initiative with MEPMA staff and also oriented the SLFs	Across the Municipalities of Andhra Pradesh,	During 2nd phase of lockdown
ICDS beneficiaries i.e., Pregnant, Lactating Women, Children 6-72 months, anemic pregnant, lactating women and malnourished (SUW/SAM/MAM) children	Estimating the quantity and commodities of Take-Home Ration (THR) for target beneficiaries under ICDS and matching the costing along with tracking the supplies of Eggs, Milk, ensuring fresh stocks are delivered at door step, publishing the entitlements in local media for transparency in supplies and educating beneficiaries on the entitlements. reaching 6.5 lakh pregnant, lactating women, 23.7 lakh children below 6 years	With the Dept of Women Development and Child Welfare, Govt AP and DPOs, 257 ICDS Blocks	During 1st and 2nd phase of lockdown during 23.03.2020 up to 05.03.2020
Partners working for nutrition and social security	Organizing a brainstorming session to consolidate advocacy areas for special measures and focus areas during and post lockdown times to combat COVID	State, National and INGOs	Scheduled on 29.04.2020
With Child Care Institutions, Children Homes and Child Line and Juvenile Homes	Advocated and supported the department in designing the SOPs for child safety and security aspects as well nutrition support to children, hand wash, social distancing measures Technical support to the department to take up the review by 'Judicial Committee' on the service delivery to children in institutions	Across the State institutes	During 1st week of April, 2020
By the Consultant Nutrition and Advocacy	Developing and translating SOPs, guidelines and regular communication to ICDS field functionaries for ensuring nutrition services, supply chain management issues, safe delivery preparedness and social security and etc.	Andhra Pradesh, Telangana and Karnataka	During lockdown times

Who	What	Where	When
UNICEF	Trained and oriented 184 Health Supervisors of Andhra Pradesh Social Welfare Residential Educational Institutions (APSWERIES) on nutrition during Covid	statewide	24th April 2020
WFP	Developing and translating SOPs, guidelines and regular communication to ICDS field functionaries for ensuring nutrition services, supply chain management issues, safe delivery preparedness and social security and etc	statewide	19th and 26th June 2020
Nutrition Alliance for Nutrition comprising of World Vision, Save the children, World Bank, Tata Trust, Agha Khan Foundation, Piramal Foundation, KHPT and UNICEF	Convene meeting for all partners in alliance agreement established on- 1. Conducting Rapid Assessment for information on nutrition service delivery through ICDS and Health systems. 2. development of advocacy briefs on global nutrition guidance contextualized for state, state wide dissemination in local language taken up. So far advocacy briefs on IYCN, Supply chain strengthening during emergency and Wasting and growth monitoring developed. 3. Step wise plan of action to restore nutrition services under social safety programs during and post lockdown.	Statewide	27th April 25th May
UNICEF	Technical support and advocacy for programme planning, capacity development, monitoring, evidence generation, documentation Partner coordination with WCD	State level	Routine programming during the year COVID-19





Assessment of Social Protection and Relief Measures in Andhra Pradesh, April 2020 by UNICEF ISP

- Provides information on the reach and implementation of the relief measures at the village or Grand Panchayat (GP) level
- Over ¾ of GP interviewed reported to continue delivery of mid-day meals to children
- Most care and support for pregnant women and lactating mothers is provided, but Distribution of PMMVY benefit was sporadic and coverage of iron/folic acid and calcium supplementation has decreased
- Many GP have not held regular routine immunization programmes during this period

## Risk Profiles

COVID-19 Conditions	Data and Source – Updated 16th May 2020					
First case diagnosed	1st April 2020 ICMR NIE-Chennai					
Districts with COVID cases / Total	12/33 Districts 22nd April 2020 COVID Update IIT-Bombay					
Nutrition Conditions	Estimate, date of data collection and source					
Wasting in children under-five	19.4% from 6/2016 - 11/2016 (CNNS)					
Exclusive Breastfeeding	63.6% from 11/2015 - 3/2016 (NFHS-4)					
Thinness in women 15-19 years	9.1% from 6/2016 - 11/2016 (CNNS)					
Anemia in women 15-19 years	53.4% from 6/2016 - 11/2016 (CNNS)					
	For further information, see <a href="#">NutritionINDIA.info</a> and <a href="#">POSHAN Led by IFPRI</a>					
Mapping of Seasonal Threats / Conditions						
Diarrhea	June & July					
Dengue	July					
Malaria						
Encephalitis	July					
Floods/Droughts	July- August					
Other Threats						
Updates from state level	Assam Government Decrees					
HMIS monthly reporting	Baseline (Oct-Dec 19)	March 20	April 20	May 20	June 20	July 20
In-school girls WIF (% & #)	45.9 (561K)					
Out of school girls WIF (% & #)	43.3 (115K)					
Pediatric IFA (% & #)	35.2 (1,092K)					
Real-time reporting and coverage of ICDS- CAS (yes/no-date, districts)	No. Coverage 0/33 Districts. Smartphones provided in 30/33 districts. First phase of trainings has been done and AWWs have initiated data entry for household survey only. No data on nutrition indicators available as of now through ICDS CAS.					
Monitoring tools implemented by development partners in states	Assam Dept of Social Welfare to develop tools for district level data on status of SNP, screening of children, supervisor home-visits and overall feedback from districts. This data collected through WhatsApp.					
National and local media reports (Radio, TV Newspapers) on nutrition conditions in affected populations.						

### Continuity of services

Date	Are Anganwadi Centres currently open?	Are Village Health Sanitation and Nutrition Days (VHSNDs) being held?	Is Growth Monitoring and Promotion conducted?	Are Take Home Rations (THR) provided for children (6-35, 36-72 months of age)?	Are MAA services currently provided?	Is the Home Base Young Child Care (HBYC) program delivering services?	Are Nutrition Rehabilitation Centres (NRCs) operational for management of Acute Malnutrition?	Are CMAM services operational?	Is the PMMVY program providing maternity benefits?	Are Take Home Rations (THR) provided for Preg/Lact Women?	Regular nutrition development partners coordination meetings to support the emergency response?
30-Mar-2020	No	No	No	Yes	No	No	Yes	No	Yes	Yes	Yes
15-Apr-2020	No	Yes	No	Yes	Yes	No	Yes	No	Yes	Yes	Yes
30-Apr-2020	No	Yes	No	Yes	Yes	No	Yes	No	Yes	Yes	Yes
15-May-2020	No	Yes	No	Yes	Yes	No	No	No	Yes	Yes	Yes
30-May-2020	No	Yes	No	Yes	Yes	No	No	No	Yes	Yes	Yes
30-Jun-2020	No	Yes	Yes	Yes	Yes	No	Yes	No	Yes	Yes	Yes
30-Jul-2020	No	Yes	Yes	Yes	Yes	No	Yes	No	Yes	Yes	Yes

#### 4W – Who does What, Where and When

Who	What	Where	When
Coalition for Food and Nutrition Security	Advocacy for CMAM - Dialogue with District Administration, sharing evidence around acute malnutrition for advocacy	2 Aspirational districts (Udalguri and Goalpara)	Since Aug 2019
Piramal Foundation	i. Engaging PRI members for community awareness ii. Support model VHSND	5 Aspirational districts (Dhubri, Goalpara, Barpeta, Udalguri, Baksa)	i. Since Mar 2020 ii. Since 2018
Tata trust (SBP)	Support day-to-day Poshan Abhiyaan implementation based on state govt directives	State and district level support (23 districts)	Since 2018
Assam Branch of Indian Tea Association (ABITA) and Bharatiya Cha Parishad (BCP)	(i) Both tea associations are coordinating with govt depts for continuity of services in eight tea intensive. (ii) Reaching out remotely to adolescent girls, pregnant women, lactating mothers (iii) Regularly sharing information on shortage of IFA blue tablets in field for govt action since April 2020 in eight tea intensive districts.	205 tea gardens in eight tea intensive districts	Since March 2020
Coalition for Food and Nutrition Security	Advocacy for CMAM - Dialogue with District Administration, sharing evidence around acute malnutrition for advocacy.	2 Aspirational districts (Udalguri and Goalpara)	Since Aug 2019
NSS volunteers	More than 33000 NSS volunteers across all districts are building community awareness on maternal and child nutrition in context of COVID19	State wide	Since May 2020
North-East Affected Area Development Society (NEADS)	Building community awareness on nutrition behaviours in context of COVID19 in one district (Jorhat). Also working with district administration in Jorhat district for remote monitoring of continuity of nutrition service delivery.	Jorhat district	Since July 2020
North-East Diocesan Social Service Society (NEDSS)	Providing relief support in context of COVID and building community awareness in Kamrup district. Livelihood promotion through training SHGs on organic farming. Promotion of children parliament in Upper Assam districts	Kamrup, Upper Assam districts (sonitpur, Biswanath)	Since Mar 2020

Who	What	Where	When
Piramal Swasthya	i. Support model VHSND and VHND monitoring ii. Engaging PRI members for community awareness iii. Community Nutrition Hubs for educating communities about healthy and nutritious diet iv. Strengthen health information helplines and telemedicine services	State wide with focus on five Aspirational districts (Dhubri, Goalpara, Barpeta, Udalguri, Baksa)	Since 2018
State Nutrition and Community Action Resource Centre (NCare Centre), Tezpur University	Concurrent monitoring on essential nutrition services in coordination with Dept of Social welfare since May 2020; Facilitated two Nutrition partners network meeting; Facilitating constitution of think-tank on IMSAM for the state	State wide	Since March 2020
Tata trust (SBP)	Support roll-out of all components under Poshan Abhiyaan working closely with SPMU Poshan Abhiyaan	State and district level (23 districts)	Since 2018
UNICEF	Technical support to state government on planning for continuity of services Technical support to State Nutrition Resource Centre for dipstick on continuity of nutrition services in context of COVID19 Collaboration with existing partners including district administrations from Aspirational districts to support continuity of essential nutrition services	State wide	Since Mar 2020
NSS volunteers	In collaboration with CAP, in May 2020, more than 33000 NSS volunteers reached with messages on nutrition (child, adolescent and women) during COVID for further dissemination among community.	State wide	Since May2020
NEADS	Building community awareness on nutrition behaviours during COVID. Also working with district administration in Jorhat district for remote monitoring of continuity of nutrition service delivery.	Jorhat district	Since July 2020



## Risk Profiles

COVID-19 Conditions	Data and Source – Updated 16th May 2020						
First case diagnosed	19th March 2020 ICMR NIE-Chennai						
Districts with COVID cases / Total	14/38 Districts 22nd April 2020 COVID Update IIT-Bombay						
Nutrition Conditions	Estimate, date of data collection and source						
Wasting in children under-five	14.5% from 8/2016 - 12/2016 (CNNS)						
Exclusive Breastfeeding	53.5% from 3/2015 - 8/2015 (NFHS-4)						
Thinness in women 15-19 years	17.3% from 8/2016 - 12/2016 (CNNS)						
Anemia in women 15-19 years	46.0% from 8/2016 - 12/2016 (CNNS)						
	For further information, see <a href="#">NutritionINDIA.info</a> and <a href="#">POSHAN Led by IFPRI</a>						
Mapping of Seasonal Threats / Conditions							
Diarrhea	May-August						
Dengue	May-August						
Malaria							
Encephalitis	April- July						
Floods/Droughts	Floods August-September, Drought- August-October mostly southern and central Bihar						
Other Threats	Record Months- Earthquake, flash floods, Kala Azar in select districts						
Updates from state level	Bihar Government Decrees						
HMIS monthly reporting	Baseline (Oct-Dec 19)	March 20	April 20	May 20	June 20	July 20	
In-school girls WIF (% & #)	45.3 (2,306K)	42(5,091K)					
Out of school girls WIF (% & #)	18.8 (1,032K)	19(5,491K)					
Pediatric IFA (% & #)	10.0 (1,436K)	21(1,436K)					
Real-time reporting and coverage of ICDS- CAS (yes/no-date, districts)	<a href="http://icdsonline.bih.nic.in">http://icdsonline.bih.nic.in</a>						
Monitoring tools implemented by development partners in states							
National and local media reports (Radio, TV Newspapers) on nutrition conditions in affected populations.	<a href="#">Six child deaths registered due to AES in Muzzaffarpur District, Bihar</a>						

### Continuity of services

Date	Are Anganwadi Centres currently open?	Are Village Health Sanitation and Nutrition Days (VHSNDs) being held?	Is Growth Monitoring and Promotion conducted?	Are Take Home Rations (THR) provided for children (6-35, 36-72 months of age)?	Are MAA services currently provided?	Is the Home Base Young Child Care (HBYC) program delivering services?	Are Nutrition Rehabilitation Centres (NRCs) operational for management of Acute Malnutrition?	Are CMAM services operational?	Is the PMMVY program providing maternity benefits?	Are Take Home Rations (THR) provided for Preg/Lact Women?	Regular nutrition development partners coordination meetings to support the emergency response?
30-Mar-2020	No	No	No	No	No	No	No	No	No	No	Yes
15-Apr-2020	Yes	Yes	Yes	Yes	yes	Yes	Yes	Yes	yes	Yes	Yes
30-Apr-2020	Yes	Yes	Yes	Yes	Yes	Yes	Yes	Yes	Yes	Yes	Yes
15-May-2020	No	Yes	No	Yes	Yes	No	Yes	No	*	Yes	Yes
30-May-2020	No	Yes	No	Yes	Yes	No	Yes	No	*	Yes	Yes
30-Jun-2020	No	Yes	Yes	Yes	Yes	No	Yes	No	Yes	Yes	Yes
30-Jul-2020	No	Yes	No	No	Yes	No	Yes	No	Yes	Yes	Yes

#### 4W – Who does What, Where and When

Who	What	Where	When
Centre of Excellence PMCH & DRPCAU PUSA with ICDS	Training on "Nutrition in Children during COVID 19". A total of 43 participants including district representatives from ICDS, DHS and Health and ICDS staff of K.Nagar	Purnea district & CSAM team	27th April 2020
UNICEF, Piramal foundation and SHSB	Meeting on SAM & Maternal nutrition with Piramal State & district team for collaboration in 5 NITI districts. Attended by State and districts teams of both Piramal and UNICEF. Attended by around 25 participants	State level + 5 Aspirational districts	16th June 2020
UNICEF and SHS-B	Orientation of District Level officials on resumption of AMB services in the context of COVID. All district level AMB nodal officers, District Drug store Managers and Dist Community Mobilisers were oriented.	State wide for all 38 districts	19th June 2020
UNICEF and SHS-B	Orientation of Block Level personnel (BMO, BCM, Drug store Managers) on resumption of AMB services in the context of COVID. More than 1300 participants across all Blocks were oriented on the AMB service resumption guideline.	State wide for all 38 districts	20th June 2020
CoE- PMCH, DPO - ICDS & DHS, Purnea	Orientation of Block Level Functionaries of ICDS on "Prevention and Management of Child Undernutrition during COVID -19". Participants included CDPOs and LS of Purnea districts, DHS members and NNM district representative. Attended by 54 participants	Purnea	20th June 2020
CoE - PMCH & UNICEF	Training on "Management of Severe Acute Malnutrition in Children" Training was held for Piramal District & Block team to orient them about SAM management including Basic knowledge on Undernutrition, Screening mechanism for SAM & Facility based SAM management. Attended by around 72 participants including District and Block level functionaries of Piramal Foundation and Consultant from UNICEF, CMAM - Purnea team	State level + 5 Aspirational districts	22nd June 2020
State Resource Centre IYCF, NMCH, UNICEF, ICDS, SHSB	Training on "IYCF during COVID 19 Pandemic": for ICDS Functionaries. Attended by State ICDS team, NNM SPMU team, Development partners, DPOs, CDPOs, SBPs. Overall around 175 participants attended	State + All districts	23rd June 2020
UNICEF and SHS-B	Rapid assessment on availability of Maternal Nutrition services and nutrition supplies at VHSND after resumption of RMNCAH+N services	At 5 Aspirational Districts	June - July 2020
State Resource Centre (IYCF-MAA), NMCH, UNICEF, ICDS	Orientation of ICDS district & block level functionaries on "IYCF during COVID 19 Pandemic". Attended by CDPOs and LS of all districts, NNM district representatives. Over 700 participants attended	State + All districts	10th July 2020
Tata trust (SBP)	Support day-to-day Poshan Abhiyaan implementation based on state govt directives, support development of training plan for ICDS CAS, ILA training.	All 38 Districts	Since 2018 and through the Covid period starting March 2020
Piramal Foundation	RMNCHA+N services, Covid related contact tracing and management in ADs monitored by Niti Aayog	5 Aspirational districts (Sitamarhi, Sheikhpura, Katihar, Araria and Begusarai)	Since 2018 and through the Covid period starting March 2020

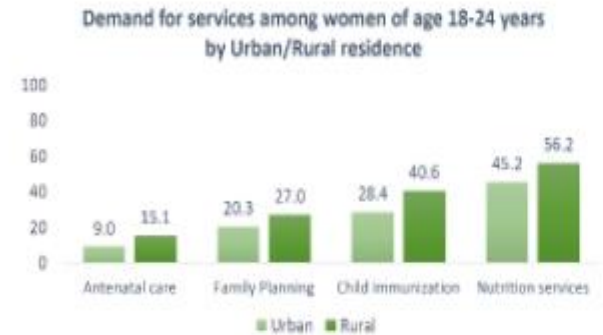
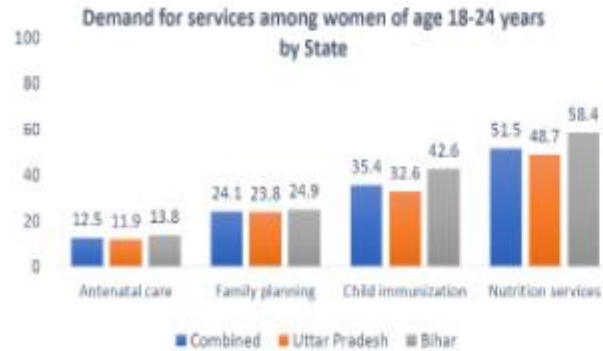
Who	What	Where	When
World Bank ( Through consulatnt support)	POSHAN Abhiyaan activities - CAP, CAS, E-ILA, CBE	At the State level	Since 2018 and through the Covid period starting March 2020
Alive and Thrive	Alive & Thrive is working at the national level on messages and supporting government, ministry of health fir the guidelines. In Bihar, at present getting support to three districts remotely on nutrition issues and awareness generation on Covid-a9 through ASHA, emphasizing more on hand wash, hygiene. They are part of the AMB assessment network for rapid AMB assessment	At the State level and select districts	2015-16 and through the Covid period starting March 2020
CARE India	RMNCHA+N service resumption in the districts. Supporting in contract tracing and management for Covid-19. They have plans to undertake a study on assessment of pobable beneficiaries among migrants in Bihar. They are also part of the BCC committee along with UNICEF, PCI and CFAR for development of appropriate messages around Covid-19. They are part of the AMB assessment	At the State level and in 38 district	Since 2013-14 and through the Covid period starting March 2020
PCI	Working in close coordination with JEEVIKA (on virtual mode) for BCC around Covid and Nutrition+ WASH	Select Districts in Bihar	Since 2016-17 and through the Covid period starting March 2020
World Vision	Distribution of THR to SAM children in one of the Blocks	Select Districts in Bihar	Through March to July 2020
Digital Green	Videos on CF and Nutrition with JEEVIKA	Select Districts in Bihar	Through March to July 2020
Aga Khan Foundation	AKF working on early childhood development and sanitation program in selected geography and has partnered with UNICEF ( WASH and DRR cluster) for work in quarantine centres	Select Districts in Bihar	Through March to July 2020
CARITAS India	Caritas India is working on strengthening hygiene practices at village level and the volunteers are helping the panchayat on hygiene and sanitation. Also engaged in IEC activity in the selected area. They are also doing a Nutrition project specifically in Mahadalit areas of select districts	Select Districts in Bihar	Through March to July 2020
Save the Children	Working in close coordination with State and District administration on Child protection issues including health, nutrition, DRR	Select Districts in Bihar	Through March to July 2020
Centre of Excellence PMCH & DRPCAU PUSA with ICDS	Training on "Nutrition in Children during COVID 19". A total of 43 participants including district representatives from ICDS, DHS and Health and ICDS staff of K.Nagar	Purnea district & CSAM team	27th April 2020
UNICEF, Piramal foundation and SHSB	Meeting on SAM & Maternal nutrition with Piramal State & district team for collaboration in 5 NITI districts. Attended by State and districts teams of both Piramal and UNICEF. Attended by around 25 participants	State level + 5 Aspirational districts	16th June 2020
UNICEF and SHS-B	Orientation of District Level officials on resumption of AMB services in the context of COVID. All district level AMB nodal officers, District Drug store Managers and Dist Community Mobilisers were oriented.	State wide for all 38 districts	19th June 2020
UNICEF and SHS-B	Orientation of Block Level personnel (BMO,BCM, Drugs store Managers) on resumption of AMB services in the context of COVID. More than 1300 participants across all Blocks were oriented on the AMB service resumption guideline.	State wide for all 38 districts	20th June 2020

Who	What	Where	When
CoE- PMCH, DPO - ICDS & DHS, Purnea	Orientation of Block Level Functionaries of ICDS on "Prevention and Management of Child Undernutrition during COVID -19". Participants included CDPOs and LS of Purnea districts, DHS members and NNM district representative. Attended by 54 participants	Purnea	20th June 2020
CoE - PMCH & UNICEF	Training on "Management of Severe Acute Malnutrition in Children" Training was held for Piramal District & Block team to orient them about SAM management including Basic knowledge on Undernutrition, Screening mechanism for SAM & Facility based SAM management. Attended by around 72 participants including District and Block level functionaries of Piramal Foundation and Consultant from UNICEF, CMAM - Purnea team	State level + 5 Aspirational districts	22nd June 2020
State Resource Centre IYCF, NMCH, UNICEF, ICDS, SHSB	Training on "IYCF during COVID 19 Pandemic": for ICDS Functionaries. Attended by State ICDS team, NNM SPMU team, Development partners, DPOs, CDPOs, SBPs. Overall around 175 participants attended	State + All districts	23rd June 2020
UNICEF and SHS-B	Rapid assessment on availability of Maternal Nutrition services and nutrition supplies at VHSND after resumption of RMNCAH+N services	At 5 Aspirational Districts	June - July 2020
State Resource Centre (IYCF-MAA), NMCH, UNICEF, ICDS	Orientation of ICDS district & block level functionaries on "IYCF during COVID 19 Pandemic". Attended by CDPOs and LS of all districts, NNM district representatives. Over 1000 participants attended	State + All districts	10th July 2020
Centre of Excellence PMCH & UNICEF	Capacity Building of District & Block functionaries of Piramal Foundation on Growth Monitoring and Identification of SAM. 53 participants attended.	DTOs & BTOs of Piramal Foundation	22nd July 2020
ICDS Gaya District and UNICEF	Orientation of ICDS frontline functionaries for Gaya district on IYCF and Maternal Nutrition. Total 120+ participants were attended through the virtual platform and were oriented on importance of breastfeeding, complementary feeding and maternal nutrition.	Gaya District (Aspirational District)	30th July 2020
Tata trust (SBP)	Support day-to-day Poshan Abhiyaan implementation based on state govt directives, support development of training plan for ICDS CAS, ILA training.	All 38 Districts	Since 2018 and through the Covid period starting March 2020
Piramal Foundation	RMNCHA+N services, Covid related contact tracing and management in ADs monitored by Niti Aayog	5 Aspirational districts (Sitamarhi, Sheikhpura, Katihar, Araria and Begusarai)	Since 2018 and through the Covid period starting March 2020
World Bank ( Through consultant support)	POSHAN Abhiyaan activities - CAP, CAS, E-ILA, CBE	At the State level	Since 2018 and through the Covid period starting March 2020
Alive and Thrive	Alive & Thrive is working at the national level on messages and supporting government, ministry of health fir the guidelines. In Bihar, at present getting support to three districts remotely on nutrition issues and awareness generation on Covid-a9 through ASHA, emphasizing more on hand wash, hygiene. They are part of the AMB assessment network for rapid AMB assessment. They did a assessment on home visit by ASHAs in the State.	At the State level and select districts	2015-16 and through the Covid period starting March 2020



Who	What	Where	When
CARE India	RMNCHA+N service resumption in the districts. Supporting in contract tracing and management for Covid-19. They have plans to undertake a study on assessment of probable beneficiaries among migrants in Bihar. They are also part of the BCC committee along with UNICEF, PCI and CFAR for development of appropriate messages around Covid-19. They are part of the AMB assessment	At the State level and in 38 district	Since 2013-14 and through the Covid period starting March 2020
PCI	Working in close coordination with JEEVIKA (on virtual mode) for BCC around Covid and Nutrition+ WASH	Select Districts in Bihar	Since 2016-17 and through the Covid period starting March 2020
World Vision	Distribution of THR to SAM children in one of the Blocks	Select Districts in Bihar	Through March to July 2020
Digital Green	Videos on CF and Nutrition with JEEVIKA	Select Districts in Bihar	Through March to July 2020
Aga Khan Foundation	AKF working on early childhood development and sanitation program in selected geography and has partnered with UNICEF ( WASH and DRR cluster) for work in quarantine centres	Select Districts in Bihar	Through March to July 2020
CARITAS India	Caritas India is working on strengthening hygiene practices at village level and the volunteers are helping the panchayat on hygiene and sanitation. Also engaged in IEC activity in the selected area. They are also doing a Nutrition project specifically in Mahadalit areas of select districts	Select Districts in Bihar	Through March to July 2020
Save the Children	Working in close coordination with State and District administration on Child protection issues including health, nutrition, DRR	Select Districts in Bihar	Through March to July 2020

## Demand for RCH and Nutrition Services

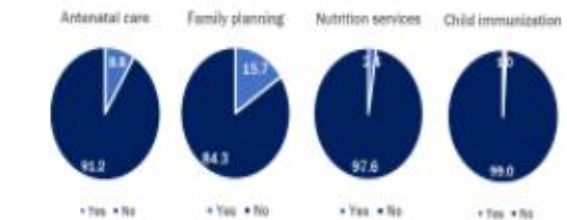


Demand for nutrition services is highest, followed by child immunization and family planning services

- 52% young women wanted nutrition services
- 35% young women wanted child immunization services
- 24% young women wanted family planning services

Demand for such services is much higher in rural areas than in urban areas

Among those wanted services, almost a negligible proportion received them



Among young women (18-24 years) who wanted different services during the lockdown, only a few (1-16%) received them

UDAYA/SDG Cohort Study, Bihar and Uttar Pradesh; Population Council

- Rapid telephone survey with 2041 young people (ages 18–25 years) and/or an adult household member
- Baseline conducted from April 3–12, 2020
- Findings on awareness of COVID-19 symptoms, perceived risk, awareness of and ability to carry out preventive behaviors, misconceptions, fears, and the economic and food security impacts, mental health, access to services – all aimed to inform the development of stakeholders' interventions and/or strategies

## Risk Profiles

COVID-19 Conditions	Data and Source – Updated 16th May 2020					
First case diagnosed	19th March 2020 ICMR NIE-Chennai					
Districts with COVID cases / Total	5/28 Districts 22nd April 2020 COVID Update IIT-Bombay					
Nutrition Conditions	Estimate, date of data collection and source					
Wasting in children under-five	19.3% from 9/2017 - 3/18 (CNNS)					
Exclusive Breastfeeding	77.2% from 1/2016 - 6/2016 (NFHS-4)					
Thinness in women 15-19 years	11.0% from 9/2017 - 3/18 (CNNS)					
Anemia in women 15-19 years	41.4% from 9/2017 - 3/18 (CNNS)					
	For further information, see <a href="#">NutritionINDIA.info</a> and <a href="#">POSHAN Led by IFPRI</a>					
Mapping of Seasonal Threats / Conditions						
Diarrhea	May to September					
Pneumonia	September to November					
Malaria/ Dengue	July to December					
SAM	April - August					
Other Threats	Bastar region in southern part of Chhattisgarh covers 7 districts in its Division that are particularly vulnerable tribal group (PVTG) and civil strife affected where services are compromised due to Naxalite attacks and hard to reach areas are not accessible during rainy seasons.					
Updates from state level	Chhattisgarh Government Decrees					
HMIS monthly reporting	Baseline (Oct-Dec 19)	March 20	April 20	May 20	June 20	July 20
In-school girls WIF (% & #)	49.4 (553K)					
Out of school girls WIF (% & #)	51.2 (81K)					
Pediatric IFA (% & #)	3.4 (93K)	1.5 (40 K)				
Real-time reporting and coverage of ICDS- CAS (yes/no-date, districts)	ICDS-CAS coverage in 7/27 districts					
Monitoring tools implemented by development partners in states	UNICEF & Nutrition International monitoring of CBEs with data collection on IYCF Practices. Data on NRC admission and SAM children is monitored through online NRC MIS Health & ICDS service delivery monitoring tool developed by UNICEF. Daily data collection on Health & ICDS services by UNICEF Consultants					
National and local media reports (Radio, TV Newspapers) on nutrition conditions in affected populations.						

### Continuity of services

Date	Are Anganwadi Centres currently open?	Are Village Health Sanitation and Nutrition Days (VHSNDs) being held?	Is Growth Monitoring and Promotion conducted?	Are Take Home Rations (THR) provided for children (6-35, 36-72 months of age)?	Are MAA services currently provided?	Is the Home Base Young Child Care (HBYC) program delivering services?	Are Nutrition Rehabilitation Centres (NRCs) operational for management of Acute Malnutrition?	Are CMAM services operational?	Is the PMMVY program providing maternity benefits?	Are Take Home Rations (THR) provided for Preg/Lact Women?	Regular nutrition development partners coordination meetings to support the emergency response?
30-Mar-2020	No	No	No	Yes	No	No	No	No	No	Yes	No
15-Apr-2020	No	No	No	Yes	No	No	No	No	No	Yes	Yes
30-Apr-2020	No	No	No	Yes	No	No	No	No	No	Yes	Yes
15-May-2020	No	No	No	Yes	No	No	No	No	No	Yes	Yes
30-May-2020	No	No	No	Yes	No	No	No	No	No	Yes	Yes
30-Jun-2020	No	Yes	No	Yes	Yes	Yes	No	No	No	Yes	Yes
30-Jul-2020	No	Yes	Yes	Yes	Yes	Yes	No	No	Yes	Yes	Yes

#### 4W – Who does What, Where and When

Who	What	Where	When
Nutrition International	1. Assessment of IFA supplementation in the field as per state guidance during COVID situation through Implementing Partner. Partners has reached in 55 blocks to 37 FLWs and 1463 households to know the status of IFA distribution. 2. District and block level coordination with Nodal officers to ensure the percolation of guidelines to block level and implementation of AMB guideline during COVID situation 3. Jointly supporting other partners to develop integrated monitoring tool for nutrition programs in CG	12 Districts- Narayanpur, Kondagaon, Bastar, Raipur, Dhamtari, Kanker, Gariyaband, Mahasamund, Balodabazar, Dantewada, Bijapur, Sukma	May 2020
AIIMS Raipur (State Center of Excellence)	1. Second round of COVID orientation for all NRCs on 11 May 2020 2. Telephonic follow up of NRC discharged SAM children through FDs-total 778 children followed up till 10 May 2020 3. Initiated counselling and recipe demonstration video development with help of NRC FDs and Cooks 4. Routine SAM programming through SCoE through out year	Raipur and all NRCs in State	May 2020
SAATHI	1.Assisted immunization sessions through VHNDs organised in hamlets 2.Team assisted in promoting and counselling for handwashing, and hygiene measures to be followed during the pandemic 3. The team also arranged for cash incentives for around 1050 migrants and vulnerable families and rations and essentials for all the migrants who have settled and come back. 4. Installation of Hand washing points at entry points on highways 5. Counselling on IYCF and COVID-19 in community through whatsapp media and videos 6. Awareness generation activities on COVID-19	Narayanpur district	May 2020
Ramakrishna Mission Ashram	1. Ensuring essential services reaching to community through team members as teams are going into field with one week of ration for entire village and improvement in home visits observed. 2. IYCF and COVID-19 counselling through mobilization of team members 3. Continued COVID-19 awareness generation and response activities in Narayanpur district 4. challenges in NRC admissions inspite of increasing screening and identification of SAM, which was counteracted by counselling on home feeding for SAM children 5.Coordination with PDS for availability of ration for hard to reach community 6. Assited ANC visits for improving institutional deliveries during COVID	Narayanpur district	May 2020
PRADAN	COVID-19 response activities to sustain livelihood of tribals in coordination with SRLM, mobilizing VRF funds to needy through VO's orientation of districts/SHGs for Covid orientation and livelihood activities	4 district Baster, Kanker, Dhamtari and Raigarh .	May 2020
World Vision	1. Rapid assessment of Health and Nutrition services in field 2. Growth monitoring before lockdown and identification of families with SAM and MAM children and facilitation for distribution of ration to those families 3. Team is actively engaged in increasing awareness on hygiene, Handwashing, ration distribution to 6752 families, food packet distribution along with recipe booklets for focused messages on dietary diversity during emergency 4. Counselling of 7000 pregnant and lactating mothers on maternal nutrition and IYCF practices 5. Orientation of 324 volunteers on support services during COVID 6. Audio messages, radio jingles and display of messages through vehicles in 300 villages for child protection and other essential behaviors to be followed during COVID 7. Distribution of 25000 hygiene kit to families and migrants and to quarantine centers 8. Facilitation to 7000 families for linking it with government for cash transfers	5 Blocks of 5 districts - Rajnandangaon (Rajnandgaon), Korba (Korba), Balod (Gunderdehi), Raipur(Slum) and Bilaspur (Kota)	May 2020



Who	What	Where	When
SRLM- SWABHIMAAN	1. SHGs are engaged in production of masks and sanitisers 2. Coordination with Anganwadi workers and Mitans for THR and sanitary pads distribution 3. Cadre to continue home visits for at risk pregnant women and children at risk 4. dissemination of audio video clip and demonstration and ANM is informing to provide health services 5. Distribution of essential commodities like soap, sanitary napkins, masks along with THR and Ration 6. SRLM has initiated SHG based Bihan mart- on wheels, vehicles for door to door ration distribution 7. Dry leaf based plates and bowl production through SHGs for use in quarantine centers to feed people and migrants	Bastar & Bastanar Block	May 2020
KVK- Indira Gandhi Agriculture University	1. Six KVKs out of 74 KVKs are functional for seed production 2. Online training of farmers for Kharif crop and distribution of seeds and fertilizers to farmers in small batches 3. Volunteered help for engagement of migrants seeking opportunities for working, at the time of lockdown, engaging them in agriculture activities 4. Working on reaching to farmers for seeds availability and sustaining farming during COVID-19	Raipur	May 2020
Evidence action	Routine programming and field assessment of essential services	All Districts	May 2020
Pt. JNM Medical College	Engaged in screening ,isolation, trainings for awareness , counselling and technical trainings related to COVID	Raipur	May 2020
C3	Routine Programming	Bilaspur and Surguja	Continuing
UNICEF	1. Online Nutrition Partners' meeting 2.Field based service delivery assessment round-4 3. Coordination with government for restoring essential nutrition services 4. Coordination with DRR section for ensuring nutrition and wash services to transit migrants	Raipur and all Districts	May 2020
ICDS	Provision of fortified rice in one district		July-Dec 2020
Nutrition International	1. Assessment of IFA supplementation in the field as per state guidance during Covid situation through Implementing Partner 2. District and block level coordination with nodals to ensure the implementation of AMB guideline during covid situation 3.Jointly supporting other partners to develop integrated monitoring tool for nutrition programs in CG	12 Districts- Narayanpur, Kondagaon, Bastar, Raipur, Dhamtari, Kanker, Gariyaband, Mahasamund, Balodabazar, Dantewada, Bijapur, Sukma	20-Apr
AIIMS Raipur (State Center of Excellence)	1. NRC orientation on COVID-19 through online Platform 2. Followed up of telephonic follow up of NRC discharged SAM children through FDs 3. Initiated TeleOPD at SCoE for NRCs, 4. Routine SAM programming through SCoE through out year	Raipur and all NRCs in State	March & April 2020
SAATHI	1.Assisted immunization sessions through VHNDs organised in hamlets 2.Ensured availability of masks, sanitizers, THR to all beneficiaries through monitoring support 3.Installation of Hand washing points at entry points on highways 4. Counselling on IYCF and COVID-19 in community through whatsapp media and videos 5. Awareness generation activities on COVID-19	Narayanpur district	March & April 2020

Who	What	Where	When
Ramakrishna Mission Ashram	1. Ensuring essential services reaching to community through team members 2. IYCF and COVID-19 counselling through mobilization of team members 3. Continued COVID-19 awareness generation and response activities in Narayanpur district 4. Coordination with PDS for availability of ration for hard to reach community	Narayanpur district	March & April 2020
PRADAN	COVID-19 response activities to sustain livelihood of tribals in coordination with SRLM, mobilizing VRF funds to needy through VOs	4 district Bastar, Kanker, Dhamtari and Raigarh .	April' 2020
World Vision	Rapid assessment of Health and Nutrition services in field	5 Blocks of 5 districts - Rajnandangaon (Rajnandgaon), Korba (Korba), Balod (Gunderdehi), Raipur(Slum) and Bilaspur (Kota)	April' 2020
SRLM- SWABHIMAAN	1. Cadre to continue home visits for at risk pregnant women and children at risk 2. dissemination of audio video clip and demonstration and ANM is informing to provide health services 3. Ensuring THR distribution through AWWs & raw ration through MDM 4. Prepared around 10,000 mask 5. Distribution of essential commodities like soap, sanitary napkins, masks along with THR and Ration	Bastar & Bastanar Block	March & April 2020
KVK- Indira Gandhi Agriculture University	Working on reaching to farmers for seeds availability and sustaining farming during COVID-19	Raipur	March & April 2020
Evidence action	Routine programming and field assessment of essential services	All Districts	March & April 2020
Pt. JNM Medical College	Engaged in screening ,isolation, trainings for awareness , counselling and technical trainings related to COVID	Raipur	March & April 2020
C3	Routine Programming of teachers training on adolescent nutrition	Bilaspur and Surguja	During the year
UNICEF	Partners's online meeting, Field based service delivery assessment rounds, NYKS Orientation on COVID-19,	Raipur and all Districts	March & April 2020



An Assessment on the Status of Nutrition Services, Behaviours, Practices and Activities in Chhattisgarh, under the Nutrition programme of UNICEF Raipur

- Telephonic interview of 33 ICDS functionaries (District Programme Officers, CDPOs and Lady Supervisor) from 27 districts
- Data collection from 20-30th April 2020
- IFA given to 48% of mothers and 59% of adolescents
- Functioning of NRCs seen in only twelve districts (44%). No referral of children and mothers are happening.

## Risk Profiles

COVID-19 Conditions	Data and Source – Updated 16th May 2020					
First case diagnosed	<u>2nd March 2020 ICMR NIE-Chennai</u>					
Districts with COVID cases / Total	<u>11/11 Districts 22nd April 2020 COVID Update IIT-Bombay</u>					
Nutrition Conditions	Estimate, date of data collection and source					
Wasting in children under-five	14.8% from 3/2016 - 9/2016 (CNNS)					
Exclusive Breastfeeding	49.8% from 2/2016 - 9/2016 (NFHS-4)					
Thinness in women 15-19 years	14.1% from 3/2016 - 9/2016 (CNNS)					
Anemia in women 15-19 years	56.5 % from 3/2016 - 9/2016 (CNNS)					
	For further information, see <a href="http://NutritionINDIA.info">NutritionINDIA.info</a> and <a href="#">POSHAN Led by IFPRI</a>					
Mapping of Seasonal Threats / Conditions						
Diarrhea						
Dengue						
Encephalitis						
Floods						
Other Threats	Violent Unrest, Earthquakes					
Updates from state level	Delhi Government Decrees					
HMIS monthly reporting	Baseline (Oct-Dec 19)	March 20	April 20	May 20	June 20	July 20
In-school girls WIF (% & #)	2.5 (35K)					
Out of school girls WIF (% & #)	1.4 (700)					
Pediatric IFA (% & #)	0.1 (1,500)					
Real-time reporting and coverage of ICDS- CAS (yes/no-date, districts)						
Monitoring tools implemented by development partners in states						
National and local media reports (Radio, TV Newspapers) on nutrition conditions in affected populations.						

## Risk Profiles

COVID-19 Conditions	Data and Source – Updated 16th May 2020					
First case diagnosed	20th March 2020 ICMR NIE-Chennai					
Districts with COVID cases / Total	27/33 Districts 22nd April 2020 COVID Update IIT-Bombay					
Nutrition Conditions	Estimate, date of data collection and source					
Wasting in children under-five	16.9% from 11/2017 - 3/18 (CNNS)					
Exclusive Breastfeeding	55.8% from 1/2016 - 6/2016 (NFHS-4)					
Thinness in women 15-19 years	22.3% from 11/2017 - 3/18 (CNNS)					
Anemia in women 15-19 years	47.8% from 11/2017 - 3/18 (CNNS)					
	For further information, see <a href="http://NutritionINDIA.info">NutritionINDIA.info</a> and <a href="#">POSHAN Led by IFPRI</a>					
Mapping of Seasonal Threats / Conditions						
Diarrhea	Peak August - Cases 29,397 (Aug 2019)					
Dengue	Peak November -Cases 4934 (Nov 2019)					
Encephalitis	Peak August – 6 deaths (Aug 2019)					
Floods/Droughts	Flood Risk in Districts					
Other Threats						
Updates from state level	Gujarat Government Decrees					
HMIS monthly reporting	Baseline (Oct-Dec 19)	March 20	April 20	May 20	June 20	July 20
In-school girls WIF (% & #)	29.3 (921K)					
Out of school girls WIF (% & #)	95 (48K)					
Pediatric IFA (% & #)	21.4 (1,268K)					
Real-time reporting and coverage of ICDS- CAS (yes/no-date, districts)						
Monitoring tools implemented by development partners in states	TeCHO + Application for Screening and F-SAM ODK App for the Dharampur Block CMAM Supervision					
National and local media reports (Radio, TV Newspapers) on nutrition conditions in affected populations.						

### Continuity of services

Date	Are Anganwadi Centres currently open?	Are Village Health Sanitation and Nutrition Days (VHSNDs) being held?	Is Growth Monitoring and Promotion conducted?	Are Take Home Rations (THR) provided for children (6-35, 36-72 months of age)?	Are MAA services currently provided?	Is the Home Base Young Child Care (HBYC) program delivering services?	Are Nutrition Rehabilitation Centres (NRCs) operational for management of Acute Malnutrition?	Are CMAM services operational?	Is the PMMVY program providing maternity benefits?	Are Take Home Rations (THR) provided for Preg/Lact Women?	Regular nutrition development partners coordination meetings to support the emergency response?
30-Mar-2020	No	No	No	Yes	Yes	No	No	No	Yes	Yes	No
15-Apr-2020	No	No	No	Yes	Yes	Yes	Yes	No	Yes	Yes	Yes
30-Apr-2020	No	No	No	Yes	Yes	Yes	Yes	No	Yes	Yes	Yes
15-May-2020	No	Yes	Yes	Yes	No	No	No	No	Yes	Yes	Yes
30-May-2020	No	Yes	Yes	Yes	No	No	No	No	Yes	Yes	Yes
30-Jun-2020	No	Yes	No	Yes	Yes	No	No	No	Yes	Yes	Yes
30-Jul-2020	No	Yes	No	Yes	Yes	Yes	Yes	No	Yes	Yes	Yes



#### 4W – Who does What, Where and When

Who	What	Where	When
UNICEF, IPE Global, Alive and Thrive, NI, IIPHG.	Coordination meeting on continuity of nutrition services in Gujarat. Plan for finalizing tool for survey on continuity of services and its dissemination.	State: Gujarat	15-Apr
Nutrition Partners	Discussed on current situation and relevant activities that should be undertaken, including for migrants and in urban pockets. Proceedings of the deliberations will be shared shortly.	State: Gujarat	28-Apr
WFP	Developing and translating SOPs, guidelines and regular communication to ICDS field functionaries for ensuring nutrition services, supply chain management issues, safe delivery preparedness and social security and etc	statewide	19th and 26th June 2020
Nutrition Alliance for Nutrition comprising of World Vision, Save the children, World Bank, Tata Trust, Agha Khan Foundation, Piramal Foundation, KHPT and UNICEF	Convene meeting for all partners in alliance agreement established on- 1. Conducting Rapid Assessment for information on nutrition service delivery through ICDS and Health systems. 2. development of advocacy briefs on global nutrition guidance contextualized for state, state wide dissemination in local language taken up. So far advocacy briefs on IYCN, Supply chain strengthening during emergency and Wasting and growth monitoring developed. 3. Step wise plan of action to restore nutrition services under social safety programs during and post lockdown.	Statewide	27th April 25th May
UNICEF	Technical support and advocacy for programme planning, capacity development, monitoring, evidence generation, documentation Partner coordination with WCD	State level	Routine programming during the year COVID-19
State COE	Remote capacity building and review planned and conducted for district and taluk level NRCs across state. Guidance on management of children with COVID developed and implementation supported across states.	State level	Routine programming during the year COVID-19
Poshan Abhiyaan Unit	Capacity building of the Poshan Abhiyaan and ICDS volunteers on Rapid Assessment	State level	15th July 2020

A survey of 500 households by Indian Institute of Management, Ahmedabad collected data on the issues faced by low-income families during the nationwide lockdown.

- Collected data between 29 March and 9 April from Urban Ahmedabad
- 40% families were facing food or medicine supply-related issues
- 94% unaware of cash transfers by the government under the Covid-19 relief package
- 80% of those whose children are enrolled in government schools did not receive any food-related assistance from the Anganwadis



## Risk Profiles

COVID-19 Conditions	Data and Source – Updated 16th May 2020					
First case diagnosed	<u>31st March 2020 ICMR NIE-Chennai</u>					
Districts with COVID cases / Total	<u>8/24 Districts 22nd April 2020 COVID Update IIT-Bombay</u>					
Nutrition Conditions	Estimate, date of data collection and source					
Wasting in children under-five	29.1% from 3/2017 - 6/2017 (CNNS)					
Exclusive Breastfeeding	65.0% from 4/2016 - 12/2016 (NFHS-4)					
Thinness in women 15-19 years	17.2% from 3/2017 - 6/2017 (CNNS)					
Anemia in women 15-19 years	53.7% from 3/2017 - 6/2017 (CNNS)					
	For further information, see <a href="http://NutritionINDIA.info">NutritionINDIA.info</a> and <a href="#">POSHAN Led by IFPRI</a>					
Mapping of Seasonal Threats / Conditions						
Diarrhea	June to September					
Malaria	June to September					
Dengue	June to September					
Encephalitis	June to September					
Floods/Droughts	June to August (rare phenomena and restricted to few districts only)					
Other Threats						
Updates from state level	<u>Jharkhand Government Decrees</u>					
HMIS monthly reporting	Baseline (Oct-Dec 19)	March 20	April 20	May 20	June 20	July 20
In-school girls WIF (% & #)	38.4 (443K)					
Out of school girls WIF (% & #)	21.9 (360K)					
Pediatric IFA (% & #)	2.5 (101K)					
Real-time reporting and coverage of ICDS- CAS (yes/no-date, districts)	ICDS CAS coverage in 7/24 districts					
Monitoring tools implemented by development partners in states						
National and local media reports (Radio, TV Newspapers) on nutrition conditions in affected populations.						

### Continuity of services

Date	Are Anganwadi Centres currently open?	Are Village Health Sanitation and Nutrition Days (VHSNDs) being held?	Is Growth Monitoring and Promotion conducted?	Are Take Home Rations (THR) provided for children (6-35, 36-72 months of age)?	Are MAA services currently provided?	Is the Home Base Young Child Care (HBYC) program delivering services?	Are Nutrition Rehabilitation Centres (NRCs) operational for management of Acute Malnutrition?	Are CMAM services operational?	Is the PMMVY program providing maternity benefits?	Are Take Home Rations (THR) provided for Preg/Lact Women?	Regular nutrition development partners coordination meetings to support the emergency response?
30-Mar-2020	No	No	No	Yes	Yes	Yes	Yes	Yes	Yes	Yes	Yes
15-Apr-2020	Yes	Yes	Yes	Yes	Yes	Yes	Yes	Yes	Yes	Yes	Yes
30-Apr-2020	Yes	Yes	Yes	Yes	Yes	Yes	Yes	Yes	Yes	Yes	Yes
15-May-2020	No	Yes	No	Yes	Yes	Yes	Yes	No	Yes	Yes	Yes
30-May-2020	No	Yes	No	Yes	Yes	Yes	Yes	No	Yes	Yes	Yes
30-Jun-2020	No	Yes	Yes	Yes	Yes	Yes	Yes	No	Yes	Yes	Yes
30-Jul-2020	No	Yes	No	Yes	Yes	Yes	Yes	No	Yes	Yes	Yes

#### 4W – Who does What, Where and When

Who	What	Where	When
Weithungerhilfe	Promoting local kitchen gardens to keep diet diversity intact.	Giridih, Deoghar, East Singhbhum	Routine programming components and also being reinforced aggressively during COVID-19
LWE – Aspirational Districts Resource Centre – TATA Trust	Supporting District Administrations in 15 districts to fill the gaps in service delivery	Bokaro, Chatra, Dumka, E. Singhbhum, Garwah, Giridih, Gumla, Hazaribag, Khunti, Latehar, Lohardaga, Palamu, Ramgarh, Ranchi, Simdega, West Singhbhum	Routine programming components and also being reinforced aggressively during COVID-19
Save the Children	Providing dry ration to the vulnerable communities to how many persons?	Gumla, West Singhbhum	During COVID-19 outbreak
Plan International	Plan is concentrating on Dry ration kit distribution, mainly pulses and oil.	Khunti, Hazaribagh, West Singhbhum	During COVID-19 outbreak
Piramal Foundation	·Performing home to home distribution of THR along with Government functionaries · Supporting PRI members and Inter-Faith leaders to take lead in awareness generation	Pakur and Sahibganj (NITI Aayog Aspiration districts)	Routine programming components and also being reinforced aggressively during COVID-19
PHRN	Supporting districts in THR distribution	Chatra, Deoghar, Dumka	During COVID-19 outbreak
EKJUT	Providing dry ration to district administration · Started community kitchens · Working with children below 3 years of age through community creches · Counselling to families taking place · Supporting Department of Health in data digitisation	West Singhbhum	During COVID-19 outbreak
CINI	Supporting Childcare institutions with dry ration and hygiene kit, providing menstrual products and working with districts for last mile delivery	Ranchi, Gumla, Latehar and Khunti	During COVID-19 outbreak
MSF	Supporting the management of MAM and SAM children	Chakradharpur block of West Singhbhum district	Routine programming components and also being reinforced aggressively during COVID-19
C3 - Center for Catalysing change	Involved PRI members to do close monitoring ·Counselling being done for community ·Providing hygiene kits and sanitary products	Gumla, West Singhbhum, Lohardaga	During COVID-19 outbreak
PRADAN	·Mapping vulnerable families in 38 blocks · Providing dry packets to these families · Planning to set up community kitchen	38 blocks in more than 8 districts	During COVID-19 outbreak
World Vision	·Working with FLWs ·Connecting households without ration cards with Mukhyas who are delivering ration these households	Ranchi, Bokaro, Dumka, Sahibganj	During COVID-19 outbreak

Who	What	Where	When
IPE-GLOBAL/WECan	·Coordination support for C2IQ meetings in Jharkhand ·Micronutrient Supply chain validation - availability of stocks at different levels, risk of expiry status etc.	Lohardaga, Latehar, Sindega, Khunti, Dumka and Ranchi	Routine programming components and also being reinforced aggressively during COVID-19
Welthungerhilfe	Promoting local kitchen gardens to keep diet diversity intact. Any different activity than before emergency?	Giridih, Deoghar, East Singhbhum	30 March onwards -during lockdown in the months of March through June' Routine programming components and also being reinforced aggressively during COVID-19
LWE – Aspirational Districts Resource Centre – TATA Trust	Supporting District Administrations in 15 districts to fill the gaps in service delivery	Bokaro, Chatra, Dumka, E. Singhbhum, Garhwa, Giridih, Gumla, Hazaribag, Khunti, Latehar, Lohardaga, Palamu, Ramgarh, Ranchi, Simdega, West Singhbhum	30 March onwards -during lockdown in the months of March through June' Routine programming components and also being reinforced aggressively during COVID-19
Save the Children	Providing dry ration to the vulnerable communities To how many persons? Is this related to lack of government services for THR?	Gumla, West Singhbhum	30 March onwards -during lockdown in the months of March through June During COVID-19 outbreak
Plan International	Plan is concentrating on Dry ration kit distribution, mainly pulses and oil. To how many persons? Is this related to lack of government services for THR?	Khunti, Hazaribagh, West Singhbhum	30 March onwards -during lockdown in the months of March through June' During COVID-19 outbreak
Piramal Foundation	·Performing home to home distribution of THR along with Government functionaries · Supporting PRI members and Inter-Faith leaders to take lead in awareness generation	Pakur and Sahibgunj (NITI Aayog Aspiration districts)	30 March onwards -during lockdown in the months of March through June' Routine programming components and also being reinforced aggressively during COVID-19
PHRN	Supporting districts in THR distribution	Chatra, Deoghar, Dumka	30 March onwards -during lockdown in the months of March through June' During COVID-19 outbreak
EKJUT	Providing dry ration to district administration · Started community kitchens · Working with children below 3 years of age through community creches · Counselling to families taking place · Supporting Department of Health in data digitization	West Singhbhum	30 March onwards -during lockdown in the months of March through June'
CINI	Supporting Childcare institutions with dry ration and hygiene kit, providing menstrual products and working with districts for last mile delivery	Ranchi, Gumla, Latehar and Khunti	30 March onwards -during lockdown in the months of March through June'
MSF	Supporting the management of MAM and SAM children	Chakradharpur block of West Singhbhum district	Routine programming components and also being reinforced aggressively during COVID-19
C3 - Center for Catalyzing change	Involved PRI members to do close monitoring ·Counselling being done for community ·Providing hygiene kits and sanitary products	Gumla, West Singhbhum, Lohardaga	30 March onwards -during lockdown in the months of March through June'

Who	What	Where	When
PRADAN	·Mapping vulnerable families in 38 blocks · Providing dry packets to these families · Planning to set up community kitchen	38 blocks in more than 8 districts	30 March onwards -during lockdown in the months of March through June'
World Vision	·Working with FLWs ·Connecting households without ration cards with Mukhiyas who are delivering ration these households	Ranchi, Bokaro, Dumka, Sahibgunj	30 March onwards -during lockdown in the months of March through June'
IPE-GLOBAL/WeCan	·Coordination support for C2IQ meetings in Jharkhand ·Micronutrient Supply chain validation - availability of stocks at different levels, risk of expiry status etc.	Lohardaga, Latehar, Simdega, Khunti, Dumka and Ranchi	Routine programming components and also being reinforced aggressively during COVID-19
World Bank	Continuous technical Support to POSHAN Abhiyaan with focus on CAP	State level	Routine programming components
Evidence Action	Technical support to AMB for age groups (6 months to 19 years) and National Deworming Day. Have established Tele calling support to mobilize IFA supplies from district headquarter to field	All districts	Routine programming + Tele caller support to mobilize IFA supplies in district from May 2020

## Risk Profiles

COVID-19 Conditions	Data and Source – Updated 16th May 2020					
First case diagnosed	10th March 2020 ICMR NIE-Chennai					
Districts with COVID cases / Total	21/30 Districts 22nd April 2020 COVID Update IIT-Bombay					
Nutrition Conditions	Estimate, date of data collection and source					
Wasting in children under-five	19.3% from 6/2018 - 9/2018 (CNNS)					
Exclusive Breastfeeding	54.6% from 2/2015 - 7/2015 (NFHS-4)					
Thinness in women 15-19 years	15.5% from 6/2018 - 9/2018 (CNNS)					
Anemia in women 15-19 years	34.9% from 6/2018 - 9/2018 (CNNS)					
	For further information, see <a href="http://NutritionINDIA.info">NutritionINDIA.info</a> and <a href="http://POSHAN.Led.by.IFPRI">POSHAN Led by IFPRI</a>					
Mapping of Seasonal Threats / Conditions						
Diarrhea	Mar to Oct , Peak season- July					
Malaria	July to Aug					
Dengue	June to October, Peak- August					
Encephalitis	Months of Peak Transmission (11 District have reported)					
Floods/Droughts	Flood-July to Sep, Draught- March to July					
Other Threats						
Updates from state level	Karnataka Government Decrees					
HMIS monthly reporting	Baseline (Oct-Dec 19)	March 20	April 20	May 20	June 20	July 20
In-school girls WIF (% & #)	60.6 (1,023K)					
Out of school girls WIF (% & #)	11.8 (74K)					
Pediatric IFA (% & #)	0.3 (19K)					
Real-time reporting and coverage of ICDS- CAS (yes/no-date, districts)	Karnataka is in the process of procurement of Mobile Phones, hence ICDS-CAS is not been used. MPR (MIS) data is collected through Excel sheet, NOT in public domain					
Monitoring tools implemented by development partners in states	SNEHA mobile application has been developed by State and been piloted in few districts. Reporting format has been developed by State with Support of Unicef Consultants to monitor Maternal Nutrition, at present not in use at scale.					
National and local media reports (Radio, TV Newspapers) on nutrition conditions in affected populations.						

## Continuity of services

[illegible]



#### 4W – Who does What, Where and When

Who	What	Where	When
State Centre of Excellence (SCoE), Vani Villas Hospital, Bangalore	Prepared COVID19 NRC guidelines and shared with all 32 NRCs of the State (DHOs, RCHOs, Dist. Surgeons)	For the state of Karnataka	1st Week of April 2020
State Centre of Excellence (SCoE), Vani Villas Hospital, Bangalore	Guidelines for Management of SAM children with COVID19 for district Hospitals	For the state of Karnataka	Prepared in April 2020, due for approval
NHM with a partnership with UNICEF	Prepared COVID19 IYCF flyer in the Kannada Language	For the state of Karnataka	3rd week of April 2020
DWCD with UNICEF	Training module and presentations were shared with all projects/districts/ MSPTCs for capacity building of FLF on COVID19	For the state of Karnataka	1st Week of April
WFP	Developing and translating SOPs, guidelines and regular communication to ICDS field functionaries for ensuring nutrition services, supply chain management issues, safe delivery preparedness and social security and etc	statewide	19th and 26th June 2020
Nutrition Alliance for Nutrition comprising of World Vision, Save the children, World Bank, Tata Trust, Agha Khan Foundation, Piramal Foundation, KHPT and UNICEF	Convene meeting for all partners in alliance agreement established on- 1. Conducting Rapid Assessment for information on nutrition service delivery through ICDS and Health systems. 2. development of advocacy briefs on global nutrition guidance contextualized for state, state wide dissemination in local language taken up. So far advocacy briefs on IYCN, Supply chain strengthening during emergency and Wasting and growth monitoring developed. 3. Step wise plan of action to restore nutrition services under social safety programs during and post lockdown.	Statewide	27th April 25th May
UNICEF	Technical support and advocacy for programme planning, capacity development, monitoring, evidence generation, documentation Partner coordination with WCD	State level	Routine programming during the year COVID-19
State COE	Remote capacity building and review planned and conducted for district and taluk level NRCs across state. Guidance on management of children with COVID developed and implementation supported across states.	State level	Routine programming during the year COVID-19
Poshan Abhiyaan Unit	Capacity building of the Poshan Abhiyaan and ICDS volunteers on Rapid Assessment	State level	15th July 2020

Assessment on the Impact of COVID-19 Lockdown on Food and Nutrition Security in Rural Karnataka, conducted by National Law School of India University Bangalore, April 2020.

- Sample Size: 152 respondents were interviewed from 100 villages in 5 districts (Bidar, Koppal, Raichur, Vijapura and Ramanagar)
- Study was completed between 11th and 27th of April 2020
- Assessment has highlighted the effectiveness of specific measures announced by the Central and State government in terms of providing rations, food, healthcare for children and women through Anganawadis, schools and public distribution system under ICDS, MDMS and TPDS schemes
- 4 out of 5 districts have not delivered THR
- Quantity of food grains provided was inadequate for children aged between 6 months to 3 years
- Insufficient distribution of eggs

## Risk Profiles

COVID-19 Conditions	Data and Source – Updated 16th May 2020					
First case diagnosed	8th March 2020 ICMR NIE-Chennai					
Districts with COVID cases / Total	14/14 Districts 22nd April 2020 COVID Update IIT-Bombay					
Nutrition Conditions	Estimate, date of data collection and source					
Wasting in children under-five	12.6% from 10/2017- 04/2018(CNNS)					
Exclusive Breastfeeding	53.2% from 03/2016 - 10/2016 (NFHS-4)					
Thinness in women 15-19 years	9.5% from 10/2017- 04/2018 (CNNS)					
Anemia in women 15-19 years	21.4% from 10/2017- 04/2018 (CNNS)					
	For further information, see <a href="http://NutritionINDIA.info">NutritionINDIA.info</a> and <a href="#">POSHAN Led by IFPRI</a>					
Mapping of Seasonal Threats / Conditions						
Diarrhea						
Dengue						
Malaria						
Encephalitis						
Floods/Droughts						
Other Threats						
Updates from state level	Andhra Pradesh Government Decrees					
HMIS monthly reporting	Baseline (Oct-Dec 19)	March 20	April 20	May 20	June 20	July 20
In-school girls WIF (% & #)	0					
Out of school girls WIF (% & #)	0.2 (198)					
Pediatric IFA (% & #)	0.3 (6,360)					
Real-time reporting and coverage of ICDS- CAS (yes/no-date, districts)						
Monitoring tools implemented by development partners in states						
National and local media reports (Radio, TV Newspapers) on nutrition conditions in affected populations.						

#### 4W – Who does What, Where and When

Who	What	Where	When	
	Development and dissemination of videos on maintaining health, nutrition and harmony during	Pan-State	June, 2020	
	Regular updates on the food based safety nets to the Empowered group 5	Pan-State	June, 2020	
	Developed a food basket for Food and Civil Supplies –on request from the department for distribution.	Pan-State	June, 2020	

## Risk Profiles

COVID-19 Conditions	Data and Source – Updated 16th May 2020					
First case diagnosed	<u>21st March 2020 ICMR NIE-Chennai</u>					
Districts with COVID cases / Total	<u>27/51 Districts 22nd April 2020 COVID Update IIT-Bombay</u>					
Nutrition Conditions	Estimate, date of data collection and source					
Wasting in children under-five	19.6% from 10/2016 - 2/2017 (CNNS)					
Exclusive Breastfeeding	58.4% from 1/2015 - 7/2015 (NFHS-4)					
Thinness in women 15-19 years	21.2% from 10/2016 - 2/2017 (CNNS)					
Anemia in women 15-19 years	34.1% from 10/2016 - 2/2017 (CNNS)					
	For further information, see <a href="#">NutritionINDIA.info</a> and <a href="#">POSHAN Led by IFPRI</a>					
Mapping of Seasonal Threats / Conditions						
Diarrhea	June, July and August					
Dengue	May and June					
Encephalitis	No record					
Floods/Droughts	Floods (July and August) Drought (May and June)					
Other Threats	No					
Updates from state level	Madhya Pradesh Government Decrees					
HMIS monthly reporting	Baseline (Oct-Dec 19)	March 20	April 20	May 20	June 20	July 20
In-school girls WIF (% & #)	54.4 (1,375K)					
Out of school girls WIF (% & #)	46.4 (345K)					
Pediatric IFA (% & #)	23.9 (1,741K)					
Real-time reporting and coverage of ICDS- CAS (yes/no-date, districts)	ICDS data entry suspended. Coverage in 16/52 districts					
Monitoring tools implemented by development partners in states	WHO and CHAI collects regular data from field.					
National and local media reports (Radio, TV Newspapers) on nutrition conditions in affected populations.						

### Continuity of services

[illegible]

#### 4W – Who does What, Where and When

Who	What	Where	When
AAH	Implementation of IYCF interventions with growth monitoring Team trained by UNICEF for the same	Dhar	Routine plus COVID programming
Aarambh	Technical support for implementation and monitoring	Bhopal	Routine programming during the year
Aarambh	Follow up on PDS issued in urban areas	Bhopal	COVID-19 outbreak
Action Aid	Technical support for implementation and monitoring in tribal areas	State level	Routine programming during the year
Adani Foundation	Implementation and monitoring support for IYCF and SAM	Vidisha	Routine programming during the year
Centre for Integrated Development	Capacity Building, Community empowerment	Mandala Balaghat Seoni	Routine programming during the year
Centre for Integrated Development	• Support cooked food distribution in slums of Gwalior districts along with distribution of mask, sanitizer. • Counselling to be initiated in rural areas through telecalling.	Gwalior	COVID-19 outbreak
CHAI	Technical support for capacity building and monitoring	All districts	Routine programming during the year
CHAI	•Assessment of supply chain for IFA availability at various levels and ensure supply. •Support to WCD and NHM field level workers through awareness through Telecalling (scripts developed, endorsed by govt). Covered 5000 PRIs, 20000 AWWs and 10000 ASHAs, 500 ANMs. •Training of ASHAs and BCM for screening of children using MUAC •Training of field teams on VAS and IFA supplementation •Joint monitoring of AMB programme	All districts	COVID-19 outbreak
CHAMP, Catholic Health Association of MP	Implementation of services particularly immunization	State level	Routine programming during the year
EFICOR	Implementation and monitoring of MCH services	Khandwa,Panna	Routine programming during the year
Evidence Action MP	• Implementation and monitoring of deworming and IFA supplementation •Support to District & Block Health Dept. in moving IFA stock from districts & blocks to last mile •Tracking current stock & analysing procurement requirement as well.	All districts	Routine programming during the year
Evidence Action MP	•Support through tele-calling to FLWs ANM, AWWs on training received and reinforcement of key messages like symptoms & precautionary measures etc. & also send bulk SMS to ANM & ASHAs key messages related to COVID mgmt. •Training of field teams on VAS and IFA supplementation •Joint monitoring of AMB programme	All districts	COVID-19 outbreak
GIZ	Advocacy and monitoring of nutrition programs	State level	Routine programming during the year



Who	What	Where	When
GIZ	• Working with DWCD for e-learning modules with a chapter on COVID-19 • Facilitating Community Kitchen Gardens • IEC material development	State level	COVID-19 outbreak
Hunger Project	Technical support for implementation of nutrition interventions through elected women leadership program	State level	Routine programming during the year
Hunger Project	•Identify vulnerable households and the lists shared with concerned PDS authorities and facilitated prioritized distribution. •Established Whats app groups sending messages and circulating govt orders regarding COVID, including ASHAs, •Proactively working with Panchayats to prepare mask, RTE.		COVID-19 outbreak
MPVHA	Implementation of interventions for malnutrition management	All districts	Routine programming during the year
NIPI	Technical support to capacity building on SNCU, HBNC and HBYC	State level	Routine programming during the year
NIPI	•Mainly supporting dept of health to review and customization of COVID related guidelines. •Planning for post lockdown activities		COVID-19 outbreak
NIWCYD	Advocacy on child rights and nutrition	Bhopal	Routine programming during the year
NT GEAG	Implementation and monitoring of nutrition and health interventions	20 districts	Routine programming during the year
Nutrition International	Capacity Building, Technical Support, IEC BCC, M&E for anemia related interventions •Training of field teams on VAS and IFA supplementation •Joint monitoring of AMB programme	26 Districts	Routine programming during the year
Piramal Foundation	Support to implementation and monitoring of MCHN interventions	Aspirational Districts Barwani,Damoh, Khandwa,Singrauli and Vidisha	Routine programming during the year
Piramal Foundation	•Monitoring THR •Call center has been set up with daily reporting. This is for tracking all SAM children identified in CSAM programme.	Aspirational Districts Barwani,Damoh, Khandwa,Singrauli and Vidisha	COVID-19 outbreak
Save the Children	Support to implementation and monitoring of MCHN interventions	State level	Routine programming during the year
Save the Children	Supply of dry ration and food packets Medical checkup for migrant families	Barwani, Dhar and Urban Slums of Bhopal	COVID-19 outbreak
Sochara	Implementing agency focus on capacity building	State level	Routine programming during the year
Sochara	Created network of nutrition workers, mainly working on SNP to children with SAM and Pregnant and lactating mothers.	Bhopal Betul	COVID-19 outbreak
Solidaridad	Implementing agency focus on capacity building	State level	Routine programming during the year
Spadhan smaj seva samiti	Implementing agency focus on capacity building	Khandwa	Routine programming during the year
Swadesh Grahmanthan Samiti,(MHRCMP)	Implementing agency focus on capacity building	Datia	Routine programming during the year

Who	What	Where	When
TINI	Technical support for capacity building and monitoring	All districts	Routine programming during the year
UN Women	Technical support at state level on gender issues	State level	Routine programming during the year
UNFPA	Technical support for adolescent and family welfare programming	State level	Routine programming during the year
UNICEF	Technical support and advocacy for programme planning, capacity development, monitoring, evidence generation, documentation •Training of field teams on VAS and IFA supplementation •Joint monitoring of AMB programme • Remote monitoring with the support of COE • Partner coordination with WCD	State level	Routine programming during the year COVID-19
Vikas Samwad Samiti	•NGO is part of national network working for migrant workers. •Coordination with MP govt and other state govts to provide food and other services to migrant during lockdown. •In Bhopal, Jan Sampark Samuh has distributed 6000 food packages. Baccha Rasoi – Provide Milk, eggs and other foods to children. •Community kitchen garden – 5000 in 150 villages, providing vegetables in this crucial time. •Compiled and analyzed 100 orders from different departments – translated in to concise Hindi summary and distributed to FLWs, all organizations and authorities.	State level	Routine programming for food security including special efforts during COVID-19
Vasudha Vikas Sansthan	Technical support for capacity building and monitoring	Dhar	Routine programming during the year
WHH	Technical support for capacity building and monitoring	Sheopur, Chattarpur	Routine programming during the year
WHH	•Working with district administration for coordination to provide services to migrants including what's app group •20,000 soap and masks distributed in 2 districts.		COVID-19 outbreak
World Vision India	Technical support for capacity building and monitoring	Chindwada, Bhopal, Sagar, Hoshangabad, Narsinghpur, Damoh	Routine programming during the year
IHAT	Supporting govt on comprehensive training plan for COVID-19	State level	COVID-19 outbreak
World Bank	Technical support and advocacy for programme planning, capacity development, monitoring especially focusing on POSHAN Abhiyaan	State level	Routine programming during the year

## Risk Profiles

COVID-19 Conditions	Data and Source – Updated 16th May 2020					
First case diagnosed	10th March 2020 (MoHFW.gov.in) ICMR NIE-Chennai					
Districts with COVID cases / Total	32/36 Districts 22nd April 2020 COVID Update IIT-Bombay					
Nutrition Conditions	Estimate, date of data collection and source					
Wasting in children under-five	16.8% from 11/2016 - 5/2017 (CNNS)					
Exclusive Breastfeeding	56.6% from 4/2015 - 9/2015 (NFHS-4)					
Thinness in women 15-19 years	12.1% from 11/2016 - 5/2017 (CNNS)					
Anemia in women 15-19 years	47.5% from 11/2016 - 5/2017 (CNNS)					
	For further information, see <a href="http://NutritionINDIA.info">NutritionINDIA.info</a> and <a href="#">POSHAN Led by IFPRI</a>					
Mapping of Seasonal Threats / Conditions						
Diarrhea	April – June					
Dengue	June- August					
Floods/Droughts	Floods (July – August) Drought (April- May)					
Seasonal Migration	October-March					
Updates from state level	Maharashtra Government Decrees					
HMIS monthly reporting	Baseline (Oct-Dec 19)	March 20	April 20	May 20	June 20	July 20
In-school girls WIF (% & #)	48.1 (2,621K)	Not available				
Out of school girls WIF (% & #)	11.6 (231K)	Not available				
Pediatric IFA (% & #)	45.2 (3,660K)	Not available				
Real-time reporting and coverage of ICDS- CAS (yes/no-date, districts)	ICDS- CAS data halted from 24th March until further notice.					
Monitoring tools implemented by development partners in states	No separate monitoring tool by partners.					
National and local media reports (Radio, TV Newspapers) on nutrition conditions in affected populations.						

## Continuity of services

[illegible]

#### 4W – Who does What, Where and When

Who	What	Where	When
WCD & PHD	Jointly with trained 3500 ICDS Supervisors, 18000 ANM, 60,000 ASHA, 50,000 AWWs out of 110000 trained for COVID-19 and Nutrition. Training of AWWs is ongoing.	State wide	ANM, ASHA from 1st to 12th April ICDS Supervisors and AWWs from 19th April onwards.
Nehru Yuva Kendra (NYK) under Ministry of Youth Welfare, GoI, Universities of Pune, Kolhapur, Aurangabad and Nanded.	create community Warriors to support the FFF in prevention of transmission of COVID and continue programming on Nutrition core interventions. 700 Master Trainers trained and 25,000 volunteers out of 52000 reached out with core messages. 500 Master Trainers of National Social Service (NSS) trained on Nutrition and COVID -19 and their role in supporting the community. MTs reached out to 50,000 NSS volunteers attached to all universities in the state.	State wide	13th - 27th April
TATA Trust	Capacity building Of SBPs 24/28 on COVID-19 and extending support to district ICDS department to continue Nutrition activities.	24/36 districts	13th April
	Relevant literature on nutrition (IYCF, ANC care and nutrition) as provided by section/MoHFW translated in Marathi and disseminated state wide through PHD IEC Bureau and DWCD using WhatsApp, Zoom and other digital platforms.	State wide	Ongoing
RJMCHN Mission	Intensive district reviews for COVID-19 and Nutrition programming completed with guidance by Secretary DWCD. With participation from Migration, Supply of THR, Surveillance, FU of PW, New-borns and Children with SAM	10/36 districts completed	Started from 12th April and Ongoing
RJMCHN ICDS	Advocacy with DWCD based on district review resulted in guidance for THR tracking, use of WA groups for information dissemination, recipe demonstration, and follow up / tracking of ANC, New-borns and SAM cases Children with SAM identified up to 15th March 2020 are being managed through homebased VCDC using EDNF procured by ICDS Commissionerate.	State wide	

Who	What	Where	When
RJMCHN ICDS	Advocacy done for improving coverage of services to underserved Urban areas. Special plans to improve coverage of Urban ICDS, proposals pending with MWCD for approval	High burden corporation areas like Nashik, Malegaon, Bhiwandi, MCGM	
Maharashtra Innovation Society of Govt of Maharashtra Bai Jerbai Wadia Children's Hospital (CoE) Sir Ness Wadia Foundation	Technical support provided in Partnership with CoE (BJWHC) and Maharashtra Innovation Society of Govt of Maharashtra, Developed SOP and standard guidelines for food distribution and facilitated partnership with grassroots NGOs within city of Mumbai and Outside Mumbai for food distribution to stranded families. Sir Ness Wadia foundation invested resources to the tune of approx. 8 Cr. INR for distribution of meals to 6,10,000 families and provision of dry ration to 2.5 lakh families. This will continue till 15th of June.	Hotspots in Mumbai and Suburban Mumbai Thane Palghar districts	From 1st April onwards
TATA TRUST	TATA SBPs are supporting monitoring the progress of core interventions through ICDS as per the guidance issued by ICDS Commissionerate.	24/36 districts	Ongoing
Plan India	provided PPE Kits, Masks, Soap and Hand sanitizer to district administration	Nandurbar	April 2020
WCD & PHD	Trained 100,000 awws,67000 ASHA,1800,MEDICAL OFFICERS,18000 ANM trained in Nutrition in covid context.	State wide	By 15th May all the functionaries trained .
Nehru Yuva Kendra (NYK) under Ministry of Youth Welfare, GoI Universities of Pune, Kolhapur, Aurangabad and Nanded jointly with CAP.	Reached out to almost 100000 NYK and 75,000 NSS volunteers through the resource groups.Social sessions with 22 universities reaching out to 500 faculties on Nutrition and covid .	State wide	10th-20th May .
Joint initiative with CAP -with Media allaince .	Sensitized almost 120 media reporters from regional media groups on Nutrition in current context,This resulted in media engaged in exploring positive responses. There was special sessions organised by the Media alliance -Sampark with Deputy speaker of the State on Nutrition and food security and responding to it with special focus on Urban. Key experts were convened. In the monsoon assembly specila session will be organised .National food security act will be revisited.	State wide	10th-june-15th June

Who	What	Where	When
UNICEF/MGMIS/Sevagram Mediact institute.	ECD and importance of parenting integrated in the digital platforms as central to Nutrition for the frontline functionaries.WA messages developed and disseminated to almost 100000 awws and 67000 ASHAS.	Statewide	Digital platforms scaled up and continues to provide age appropriate technical information.
RJMCHN ICDS UNICEF	Revised guidance issued on the continuity of services.Special focus on GMP and providing care for children with SAM. Urban ICDS needs more support as it is in the containment zones.	14/36 districts completed.Special session with 104 Urban ICDS projects on continuity of service.Reviews were stopped due to more containment areas . Special review for tribal and urban proposed by Secretary DWCD.	June-July
State family welfare bureau -PHD GOM,National centre of Excellence-Kalawati Saran Hospital,State CoE wadia childrens hospital and UNICEF.	Trained 163 functionaries Of 43 NRC on the Protocols in the context of Covid -19.	Statewide	11th June 2020
MFO	Development of integrated plan in 2 high burden wards of Mumbai-Hot spots .Contributed to the stake holder consultations on development of road map for Nutrition.Draft frame work developed .Discussions with MCGM and DWCD planned.	MCGM/DWCD	June-July
UNICEF/IIT ,BPNI,Wadia childrens hospital,MGMIS Sevagram,Citizens Alliance.	Discussions with stake holders for MTSR in Covid context .MTSR inputs drafted and shared with special focus on Urban in context of Typology.	Statewide	June 29th
UNICEF/RJMCHN	Development of agenda and the concept note for the State review of ICDS focussing on Nutrition by Secretary DWCD/special focus on Urban .Policy discussions on strengthening Urban coverage and accountability.	State wide	July 1st to 3rd
UNICEF/NSS	Oriented 4500 NSS Volunteers using zoom and FB live platform on Anemia Mukht Bharat	Statewide	14th July 2020



## Risk Profiles

COVID-19 Conditions	Data and Source – Updated 16th May 2020					
First case diagnosed	16th March 2020 ICMR NIE-Chennai					
Districts with COVID cases / Total	10/30 Districts 22nd April 2020 COVID Update IIT-Bombay					
Nutrition Conditions	Estimate, date of data collection and source					
Wasting in children under-five	13.9% from 11/2017 - 2/2018 (CNNS)					
Exclusive Breastfeeding	65.6% from 1/2016 - 7/2016 (NFHS-4)					
Thinness in women 15-19 years	11.8% from 11/2017 - 2/2018 (CNNS)					
Anemia in women 15-19 years	50.2% from 11/2017 - 2/2018 (CNNS)					
	For further information, see <a href="http://NutritionINDIA.info">NutritionINDIA.info</a> and <a href="#">POSHAN Led by IFPRI</a>					
Mapping of Seasonal Threats / Conditions						
Diarrhea	June- September					
Dengue	June- September					
Encephalitis	September- November 2016 Malkangiri					
Floods/Droughts	May- October					
Other Threats	June - September					
Updates from state level	Odisha Government Decrees					
HMIS monthly reporting	Baseline (Oct-Dec 19)	March 20	April 20	May 20	June 20	July 20
In-school girls WIF (% & #)	26.5 (344K)					
Out of school girls WIF (% & #)	27.5 (223K)					
Pediatric IFA (% & #)	22.8 (835K)					
Real-time reporting and coverage of ICDS- CAS (yes/no-date, districts)	CAS has not yet been rolled out in the state. ICDS-CAS Coverage in 0/30 districts					
Monitoring tools implemented by development partners in states	Alternative to ICDS-CAS in Odisha is e-Pragati (Dept. of WCD&MS) - Concurrent monitoring of ICDS activities (supported by UNICEF in collaboration with RMRC-ICMR and DWCD&MS) Status of Nutrition Interventions during COVID lockdown link:					
National and local media reports (Radio, TV Newspapers) on nutrition conditions in affected populations.						

### Continuity of services

Date	Are Anganwadi Centres currently open?	Are Village Health Sanitation and Nutrition Days (VHSNDs) being held?	Is Growth Monitoring and Promotion conducted?	Are Take Home Rations (THR) provided for children (6-35, 36-72 months of age)?	Are MAA services currently provided?	Is the Home Base Young Child Care (HBYC) program delivering services?	Are Nutrition Rehabilitation Centres (NRCs) operational for management of Acute Malnutrition?	Are CMAM services operational?	Is the PMMVY program providing maternity benefits?	Are Take Home Rations (THR) provided for Preg/Lact Women?	Regular nutrition development partners coordination meetings to support the emergency response?
30-Mar-2020	No	Yes	Yes	Yes	Yes	Yes	Yes	No	*	Yes	Yes
15-Apr-2020	No	Yes	Yes	Yes	Yes	Yes	Yes	No	*	Yes	Yes
30-Apr-2020	No	Yes	Yes	Yes	Yes	Yes	Yes	No	*	Yes	Yes
15-May-2020	No	Yes	Yes	Yes	Yes	Yes	Yes	No	Yes	Yes	Yes
30-May-2020	No	Yes	Yes	Yes	Yes	Yes	Yes	No	Yes	Yes	Yes
30-Jun-2020	No	Yes	Yes	Yes	Yes	Yes	Yes	No	Yes	Yes	Yes
30-Jul-2020	No	Yes	Yes	Yes	Yes	Yes	Yes	No	Yes	Yes	Yes

#### 4W – Who does What, Where and When

Who	What	Where	When
DWCD &MS	Distribution of THR and HCM at doorstep of beneficiaries	Across the state	Till 31 May 2020
DHFW and DWCD&MS	VHSND and RI	Across the state except SC containment area with COVID positive cases	As per micro plan with maintaining social distancing and hygiene norm
DHFW and DWCD&MS	IYCF practices	Across the state	As regular programming with proper precaution to prevent infection
UN agencies and World Bank	Multisectoral COVID response plan for Odisha	Across the state	up to June 2021
FSCW Department	Distribution of food grains (PDS)	Across the state	For April, May and June 2020
Odisha Livelihood Mission	Advisory for CBOs to contain spread of COVID-19	Across the state	Till the lockdown period
JibanSampark NGO partners	Real time monitoring the nutrition services (online developed with the support of UNICEF)	In PVTG areas (12 districts)	Till 31 May 2020
developed by UN agencies and WB	Lead of food security and nutrition in development of a multi-sectoral response strategy for Government of Odisha	Pan State	May 2020
	Strategy for the door-step distribution of MDM food grain and funds to school children during COVID-19 lockdown and holidays	Pan-State	May 2020
	Strategy for operationalisation of MDM after opening of schools	Pan-State	May 2020
	Operationalisation of fortification of rice distributed through PDS network under CSS – hiring of NABL, sourcing of FRK from identified supplier, development of proto-type IEC materials, constitution of TAG, capacity building of rice millers, and compliance to other technical requirements of CSS	Pan-State	May 2020
	Setting up a mechanised THR unit	Bolangir	May 2020
	Release of video messages for building mass awareness on prevention and containment of COVID-19, respecting COVID warriors and taking care of nutrition during pandemic		
	Working with IAG for development of tools for assessment of COVID-19 on food security and nutrition, analysing the data and developing this into a report		
	Developing policy briefs on food distribution, food safety and hygiene and disseminating them through a wide range of readers/audience		

## Risk Profiles

COVID-19 Conditions	Data and Source – Updated 16th May 2020					
First case diagnosed	<u>3rd March 2020 ICMR NIE-Chennai</u>					
Districts with COVID cases / Total	<u>26/33 Districts 22nd April 2020 COVID Update IIT-Bombay</u>					
Nutrition Conditions	Estimate, date of data collection and source					
Wasting in children under-five	14.3% from 10/2016 - 1/2017 (CNNS)					
Exclusive Breastfeeding	58.2% from 1/2016 - 7/2016 (NFHS-4)					
Thinness in women 15-19 years	15.2% from 10/2016 - 1/2017 (CNNS)					
Anemia in women 15-19 years	50.3% from 10/2016 - 1/2017 (CNNS)					
	For further information, see <a href="http://NutritionINDIA.info">NutritionINDIA.info</a> and <a href="#">POSHAN Led by IFPRI</a>					
Mapping of Seasonal Threats / Conditions						
Diarrhea	June- Sep					
Dengue/ Malaria	Aug- Oct					
Encephalitis						
Floods/Droughts	June-Oct					
Other Threats						
Updates from state level	<u>Rajasthan Government Decrees</u>					
HMIS monthly reporting	Baseline (Oct-Dec 19)	March 20	April 20	May 20	June 20	July 20
In-school girls WIF (% & #)	6 (127K)					
Out of school girls WIF (% & #)	18.4 (159K)					
Pediatric IFA (% & #)	14.2 (772K)					
Real-time reporting and coverage of ICDS- CAS (yes/no-date, districts)						
Monitoring tools implemented by development partners in states	Data collection on public health/nutrition interventions for 11 platforms representative of 4 districts has been halted - data collection will restart post lockdown					
National and local media reports (Radio, TV Newspapers) on nutrition conditions in affected populations.						

### Continuity of services

[illegible]

#### 4W – Who does What, Where and When

Who	What	Where	When
All ECD partners	Communicating and coordinating with Field functionaries (AWW/ASHA/ANM), following up of Risk communication messages and contact tracing , conveying messages on stigma, precautions during COVID.	4 districts -Udaipur, Dungarpur, Barmer and Sirohi	Since lockdown in March from 26th
All development partners	to support the DHFW with the district action plan for COVID 19	for entire state	9th April
NHM	essential services letter issued where ASHA asked to take MUAC during HH visits	for entire state	24th April
	Setting up a THR production unit	Jaisalmer	July-Dec 2020
IPE Global	Is working on CCT to preg women in 4 districts for the 2nd delivery under the PMMVY programme with DWCD, and UNICEF is coordinating with them on the same at Uadipur and Dungarpur.	in their focus districts namely IPE global in Udaipur , Dungarpur , Banswara and Rajasamandh.	01-06-2020
Evidence Action	Evidence Action is working on survey for IFA supplementation with DHFW.	in all 33 districts	20-06-2020
ACF	ACF is working on 1000 days intervention in their one focus district with NHM and DWCD.UNICEF is coordinating and conveneing with DPs to focus on BIG 4s.	Baran dlstrict?	20-06-2020
DWCD	Issued letter for Growth Monitoring	for entire state	7th July 2020

Assessment conducted by UNICEF in collaboration with Nutrition Development Partners in Rajasthan

- Collected data on 28 - 29 March 2020
- From 13 / 33 districts of Rajasthan
- From 43 Development Partners

## Risk Profiles

COVID-19 Conditions	Data and Source – Updated 16th May 2020						
First case diagnosed	<u>7th March 2020 ICMR NIE-Chennai</u>						
Districts with COVID cases / Total	<u>35/38 Districts 22nd April 2020 COVID Update IIT-Bombay</u>						
Nutrition Conditions	Estimate, date of data collection and source						
Wasting in children under-five	20.7% from 5/2018 - 8/2018 (CNNS)						
Exclusive Breastfeeding	48.3% from 2/2015 - 6/2015 (NFHS-4)						
Thinness in women 15-19 years	13.4% from 5/2018 - 8/2018 (CNNS)						
Anemia in women 15-19 years	40.2% from 5/2018 - 8/2018 (CNNS)						
	For further information, see <a href="#">NutritionINDIA.info</a> and <a href="#">POSHAN Led by IFPRI</a>						
Mapping of Seasonal Threats / Conditions							
Diarrhea							
Dengue							
Malaria							
Encephalitis							
Floods/Droughts							
Other Threats							
Updates from state level	Tamil Nadu Government Decrees						
HMIS monthly reporting	Baseline (Oct-Dec 19)	March 20	April 20	May 20	June 20	July 20	
In-school girls WIF (% & #)	47.1 (1,927K)						
Out of school girls WIF (% & #)	14.7 (602K)						
Pediatric IFA (% & #)	4.3 (197K)						
Real-time reporting and coverage of ICDS- CAS (yes/no-date, districts)							
Monitoring tools implemented by development partners in states							
National and local media reports (Radio, TV Newspapers) on nutrition conditions in affected populations.							



## Risk Profiles

COVID-19 Conditions	Data and Source – Updated 16th May 2020					
First case diagnosed	<u>2nd March 2020 ICMR NIE-Chennai</u>					
Districts with COVID cases / Total	<u>28/33 Districts 22nd April 2020 COVID Update IIT-Bombay</u>					
Nutrition Conditions	Estimate, date of data collection and source					
Wasting in children under-five	17.9% from 2/2016 - 6/2016 (CNNS)					
Exclusive Breastfeeding	67.3% from 2/2015 - 5/2015 (NFHS-4)					
Thinness in women 15-19 years	21.8% from 2/2016 - 6/2016 (CNNS)					
Anemia in women 15-19 years	55.2% from 2/2016 - 6/2016 (CNNS)					
	For further information, see <a href="http://NutritionINDIA.info">NutritionINDIA.info</a> and <a href="http://POSHAN.Led.by.IFPRI">POSHAN Led by IFPRI</a>					
Mapping of Seasonal Threats / Conditions						
Diarrhea	During seasons of summer and rains (April to Sept)					
Dengue	July-Sept					
Malaria	Tribal areas (3 districts out of 33) are more prone to Malaria					
Encephalitis	During summer (Apr-Jun) and Dec-Feb					
Floods/Droughts	Floods: Aug-Oct; Drought: May-June					
Other Threats						
Updates from state level	Telangana Government Decrees					
HMIS monthly reporting	Baseline (Oct-Dec 19)	March 20	April 20	May 20	June 20	July 20
In-school girls WIF (% & #)	27.0 (463K)					
Out of school girls WIF (% & #)	25.2 (139K)					
Pediatric IFA (% & #)	7.5 (237K)					
Real-time reporting and coverage of ICDS- CAS (yes/no-date, districts)	ICDS-CAS Coverage in 10/33 districts					
Monitoring tools implemented by development partners in states	A Monitoring tool for Anganwadi Centre visits has been developed by State. <a href="https://forms.gle/bfj1kVExpqxxQGXT8">https://forms.gle/bfj1kVExpqxxQGXT8</a> <a href="http://nhhs.telangana.gov.in/index.html#/snpattendance">http://nhhs.telangana.gov.in/index.html#/snpattendance</a>					
National and local media reports (Radio, TV Newspapers) on nutrition conditions in affected populations.						

### Continuity of services

[illegible]

#### 4W – Who does What, Where and When

Who	What	Where	When
WD & CW Department	· Provision of Rice, Dal, Oil, Eggs and Milk to all Children below 72 months, Pregnant and Lactating Women · monitoring through ICDS functionaries · The Advocacy Consultant has technically supported for designing the THR for specified schedules during COVID Lockdown period from 23.03.2020 up to 03.05.2020	Across Telangana, 33 districts, 149 ICDS Projects, 34,000 Anganwadi	w.e.f 23rd March 2020
GVK Foundation	· Assessment of nutrition services i.e., delivering take-home ration at the doorstep of beneficiaries and taking feedback. · 1590 individual beneficiaries were assessed through random outbound calls made. · Out of which 87% (1378) have responded and they received Take Home Ration. Remaining beneficiaries (13%) are reached through reviews.	Randomly selected Anganwadi across Telangana	1st to 26th April 2020
'T-Social Impact Group' CSR cell of Telangana State Government	WD&CW department advocated with T-Social Impact Group (CSR cell) of Telangana and generated the following support - · 37,000 3 ply-face layered cloth masks provided by Novartis India · 12,000 hand sanitizers provided by Aurobindo Pharma · 2 lakhs sanitary pads for Adolescent Girls and women stayed in camps for migrants, these pads were supported by P&G, India	Across Telangana	During the 2nd phase of lockdown 24th April
POSHAN Abhiyaan Dist/Block units; DWD Functionaries and frontline COVID Staff	Organized dedicated Zoom Calls/Webinars and oriented the frontline functionaries and monitoring staff on social distancing, hand wash, protocols and guidelines, SOPs issued from time to time	Across Telangana, through Webinars and Zoom Calls	During the lockdown period as required
WFP	Developing and translating SOPs, guidelines and regular communication to ICDS field functionaries for ensuring nutrition services, supply chain management issues, safe delivery preparedness and social security and etc	statewide	19th and 26th June 2020
Nutrition Alliance for Nutrition comprising of World Vision, Save the children, World Bank, Tata Trust, Agha Khan Foundation, Piramal Foundation, KHPT and UNICEF	Convene meeting for all partners in alliance agreement established on- 1. Conducting Rapid Assessment for information on nutrition service delivery through ICDS and Health systems. 2. development of advocacy briefs on global nutrition guidance contextualized for state, state wide dissemination in local language taken up. So far advocacy briefs on IYCN, Supply chain strengthening during emergency and Wasting and growth monitoring developed. 3. Step wise plan of action to restore nutrition services under social safety programs during and post lockdown.	Statewide	27th April 25th May

Who	What	Where	When
UNICEF	Technical support and advocacy for programme planning, capacity development, monitoring, evidence generation, documentation • Training of field teams on Growth monitoring, SSFP and IFA supplementation • Joint monitoring of AMB programme • Remote monitoring with the support of COE • Partner coordination with WCD	State level	Routine programming during the year COVID-19
NIN Hyderabad	Orientation session for ICDS and Health functionaries on management of Acute Malnutrition for children under 5 provided	Asifabad and Gadwal	May-20
Civil Society & Voluntary COVID support Forum-9985833725 COVID Helpline	• Advocated to connect to the Civil Society Volunteers Forum on 9985833725 COVID Helpline. • This helpline enabled pregnant/lactating women and children of migrant families to get needy service includes nutrition essential services/ shelter and other necessities • So far 232 needy families reached	Hyderabad metropolitan, Rangareddy, Medchal Malkajgiri & Sangareddy districts in Telangana	Since 21st April 26th

## Risk Profiles

COVID-19 Conditions	Data and Source – Updated 16th May 2020					
First case diagnosed	4th March 2020 ICMR NIE-Chennai					
Districts with COVID cases / Total	52/75 Districts 22nd April 2020 COVID Update IIT-Bombay					
Nutrition Conditions	Estimate, date of data collection and source					
Wasting in children under-five	18.5% from 4/2016 - 9/2016 (CNNS)					
Exclusive Breastfeeding	41.9% from 1/2015 - 9/2016 (NFHS-4)					
Thinness in women 15-19 years	10.9% from 4/2016 - 9/2016 (CNNS)					
Anemia in women 15-19 years	49.2% from 4/2016 - 9/2016 (CNNS)					
	For further information, see <a href="#">NutritionINDIA.info</a> and <a href="#">POSHAN Led by IFPRI</a>					
Mapping of Seasonal Threats / Conditions						
Diarrhea	July -August (rainy season)					
Dengue	July -August (rainy season)					
Floods/Droughts						
Other Threats	Recent rains which led to serious losses to farmers and with the lockdown the ongoing sowing season is also affected, so food shortage in future may be a potential threat					
Updates from state level	Uttar Pradesh Government Decrees					
HMIS monthly reporting	Baseline (Oct-Dec 19)	March 20	April 20	May 20	June 20	July 20
In-school girls WIF (% & #)	39.4 (1,693K)					
Out of school girls WIF (% & #)	15.1 (795K)					
Pediatric IFA (% & #)	0.3 (74K)					
Real-time reporting and coverage of ICDS- CAS (yes/no-date, districts)	ICDS-CAS Coverage in 25/75 districts					
Monitoring tools implemented by development partners in states	Data collection tool exists (which tool/ partners?) data collection halted since start of lockdown 24th March					
National and local media reports (Radio, TV Newspapers) on nutrition conditions in affected populations.						

### Continuity of services

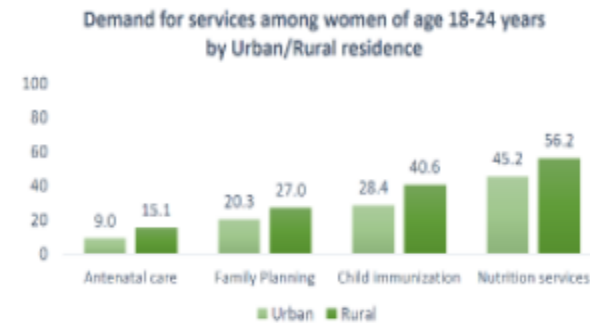
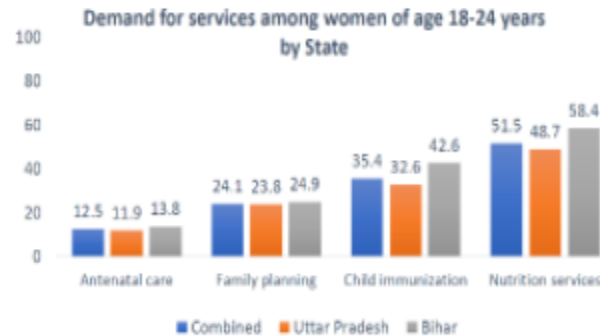
Date	Are Anganwadi Centres currently open?	Are Village Health Sanitation and Nutrition Days (VHSNDs) being held?	Is Growth Monitoring and Promotion conducted?	Are Take Home Rations (THR) provided for children (6-35, 36-72 months of age)?	Are MAA services currently provided?	Is the Home Base Young Child Care (HBYC) program delivering services?	Are Nutrition Rehabilitation Centres (NRCs) operational for management of Acute Malnutrition?	Are CMAM services operational?	Is the PMMVY program providing maternity benefits?	Are Take Home Rations (THR) provided for Preg/Lact Women?	Regular nutrition development partners coordination meetings to support the emergency response?
30-Mar-2020	No	No	No	Yes	No	No	No	No	No	Yes	Yes
15-Apr-2020	No	No	No	Yes	No	No	Yes	No	No	Yes	Yes
30-Apr-2020	No	No	No	Yes	No	No	Yes	No	No	Yes	Yes
15-May-2020	No	Yes	No	Yes	No	No	Yes	No	No	Yes	*
30-May-2020	No	Yes	No	Yes	No	No	Yes	No	No	Yes	*
30-Jun-2020	No	Yes	No	Yes	No	No	Yes	No	No	Yes	Yes
30-Jul-2020	No	Yes	No	Yes	Yes	No	Yes	No	Yes	Yes	Yes

#### 4W – Who does What, Where and When

Who	What	Where	When
UNICEF, WB, Tata Trust, Piramal, TSU-BMGF, CARE, PCI	Updating partners on the approaches being adopted by the partners (9th April) Training of partners on CAS (15th April)	State: Uttar Pradesh	9th April 15th April
	Distribution of fortified rice through the PDS	Varanasi	Oct-Dec 2020
UNICEF, WB, Tata Trust, Piramal, TSU-BMGF, CARE, PCI	Updating partners on the approaches being adopted by the partners(9th April) Trg of partners on CAS (15th April)	State: Uttar Pradesh	9th April 15th April
UNICEF, WB, Tata Trust, Piramal, TSU-BMGF	Both Health and ICDS departments are working to ensure continuity of RMNCH+A services in times of COVID. Partners are closely working with the government jointly on common areas and interdependently basis their implementation focus area. There is a close coordination amongst partners with almost weekly/sometimes biweekly meetings/discussions and deliberations . More specifically in terms of areas of support following efforts are being made by partners to support government's response to COVID: 1- All partner meet on 28th May organised by WeCan in partnership with TSU(BMGF). State learnings, field experiences shared by all partner organisations. 2.Mentoring of AWWs and Mukhya Sevikas around home visits and VHSND monitoring- TSU (BMGF) 3.Field Monitoring of VHSNDs, health facility visits on BFHI,delivery of COVID sensitive nutrition messages to frontline functionaries - UNICEF 4.Virtual training sessions of AWWs - Tata Trust 5. Consolidation of progress under Poshan Abhiyaan using available dashboards (Governance, CAS) and use of data- World Bank 6. Monitoring delivery of nutrition components during VHSNDs- Piramal Foundation	State: Uttar Pradesh	Routine meetings/discussions/deliberations (weekly/biweekly basis)
UNICEF, A&T, NI, Piramal, TSU-BMGF	Both Health and ICDS departments are working to ensure continuity of RMNCH+A services in times of COVID. Partners are closely working with the government jointly on common areas and interdependently basis their implementation focus area. There is a close coordination amongst partners with almost weekly/sometimes biweekly meetings/discussions and deliberations . Thematic collaboration was done with partners as follows UNICEF & A&T on World Breastfeeding week UNICEF-IHAT - Joint sensitization of DHEIO on Breastfeeding week UNICEF-NI - VAS & IFA (AMB under-five) roll-out in the state UNICEF-Piramal - preliminary discussion on IMSAM collaboration	Across the state	Throughout July
Media	Breastfeeding sensitization jointly with NHM & CAP	Across the state	31-Jul-20



## Demand for RCH and Nutrition Services

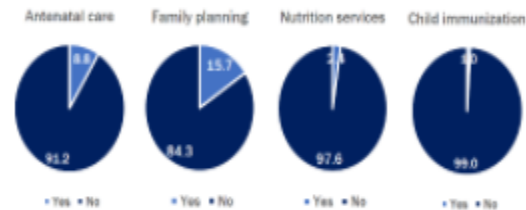


Demand for nutrition services is highest, followed by child immunization and family planning services

- 52% young women wanted nutrition services
- 35% young women wanted child immunization services
- 24% young women wanted family planning services

Demand for such services is much higher in rural areas than in urban areas

Among those wanted services, almost a negligible proportion received them



Among young women (18-24 years) who wanted different services during the lockdown, only a few (1-16%) received them

UDAYA/SDG Cohort Study, Uttar Pradesh; Population Council

- Rapid telephone survey with 2041 young people (ages 18–25 years) and/or an adult household member
- Baseline conducted from April 3–12
- 49% of female respondents of 18-24 years of age from Uttar Pradesh reported that Nutrition Services were in demand when asked about government services

## WEST BENGAL

## Risk Profiles

COVID-19 Conditions	Data and Source – Updated 16th May 2020						
First case diagnosed	18th March 2020 ICMR NIE-Chennai						
Districts with COVID cases / Total	17/23 Districts 22nd April 2020 COVID Update IIT-Bombay						
Nutrition Conditions	Estimate, date of data collection and source						
Wasting in children under-five	20.1% from 6/2018 - 11/2018 (CNNS)						
Exclusive Breastfeeding	52.3% from 2/2015 - 7/2015 (NFHS-4)						
Thinness in women 15-19 years	11.9% from 6/2018 - 11/2018 (CNNS)						
Anemia in women 15-19 years	67.6% from 6/2018 - 11/2018 (CNNS)						
	For further information, see <a href="#">NutritionINDIA.info</a> and <a href="#">POSHAN Led by IFPRI</a>						
Mapping of Seasonal Threats / Conditions							
Diarrhea	July- September						
Dengue	July- October						
Encephalitis	July (limited/not rampant)						
Floods/Droughts	August- October						
Other Threats	No						
Updates from state level	West Bengal Government Decrees						
HMIS monthly reporting	Baseline (Oct-Dec 19)	March 20	April 20	May 20	June 20	July 20	
In-school girls WIF (% & #)	15.3 (727K)						
Out of school girls WIF (% & #)	37.6 (28K)						
Pediatric IFA (% & #)	54.1 (3,601K)						
Real-time reporting and coverage of ICDS- CAS (yes/no-date, districts)	No, ICDS-CAS Coverage in 0/23 districts						
Monitoring tools implemented by development partners in states							
National and local media reports (Radio, TV Newspapers) on nutrition conditions in affected populations.							

### Continuity of services

Date	Are Anganwadi Centres currently open?	Are Village Health Sanitation and Nutrition Days (VHSNDs) being held?	Is Growth Monitoring and Promotion conducted?	Are Take Home Rations (THR) provided for children (6-35, 36-72 months of age)?	Are MAA services currently provided?	Is the Home Base Young Child Care (HBYC) program delivering services?	Are Nutrition Rehabilitation Centres (NRCs) operational for management of Acute Malnutrition?	Are CMAM services operational?	Is the PMMVY program providing maternity benefits?	Are Take Home Rations (THR) provided for Preg/Lact Women?	Regular nutrition development partners coordination meetings to support the emergency response?
30-Mar-2020	No	No	No	Yes	No	No	No	No	No	Yes	*
15-Apr-2020	No	No	No	Yes	Yes	No	No	No	No	Yes	*
30-Apr-2020	No	No	No	Yes	Yes	No	No	No	No	Yes	*
15-May-2020	No	Yes	No	Yes	Yes	No	No	No	No	Yes	*